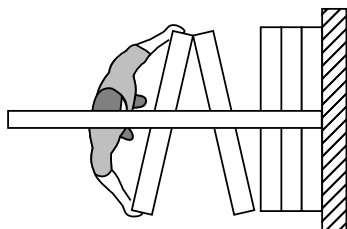




## MATA Timber-framed, Paired Panel, Movable Glass Wall

### PRODUCT OVERVIEW:



**Top Supported  
Center Stack  
Paired Panels**

**Manually Operated**

**Maximum Opening Height:** 10'2" [3.1]

**Maximum Opening Width:** Unlimited

**Product Application:** MATA is part of the LUMINOUS line of movable glass partitions from Kwik-Wall. Design in areas that you wish to divide a space with the aesthetics of natural wood and combined with clear or opaque barrier where lower levels of sound control is needed.

**Standard Features:** The perimeter frame is of wood with glass inserts and surrounding gaskets to reduce noise leaking into adjacent rooms.

**Hinged Paired Panels:** Individual, manually operated panels offer maximum room flexibility. The track system enables panels to negotiate turns and be used in alternate locations.

**How to Buy:** Kwik-Wall MATA movable glass walls are distributed, installed, and serviced by factory-trained local authorized Distributors. To locate one near your project visit [www.kwik-wall.com](http://www.kwik-wall.com)

**Delivery:** Panels are custom built for your specific project. Lead times vary due to seasonal fluctuations. Check with your Distributor for the current schedule.

**Warranty:** Carriers and panel frames are guaranteed for two-years and track for 10-years against defects in material and workmanship and track. The glass is not included in this warranty.

### Product Features and Benefits:

Look for these features when comparing similar products.

1. Feature: Top supported  
Benefit: No need for floor tracks or guides that can gather dirt and dust or cause injury.
2. Feature: Kwik-Wall 425 tracking systems.  
Benefit: Proven performance in thousands of movable wall installations around the world.
3. Feature: Matching wood glazing beads on all four sides.  
Benefit: Choose laminated or tempered glass for safety, acoustic, or aesthetic requirements.
4. Feature: Triple laminated wood construction  
Benefit: Ensures complete three way cross grain lamination for a durable panel construction with added strength and stability.
5. Feature: Custom manufactured to the exact size of the opening.  
Benefits: Instead of being locked into pre-determined panel sizes and opening widths, Kwik-Wall timber framed systems are custom designed to fit the opening allowing for more flexible designs.
6. Feature: Decorative glass or acrylic options  
Benefit: Designers can use the decorative glass options available to enhance all interior decors.
7. Feature: Mortise bolt on each panel  
Benefit: Engages in floor receptable for panel-to-panel alignment and stability.

**IMPORTANT TO NOTE:** Although Kwik-Wall Company makes every attempt to closely replicate the stain color selected, due to natural variations of color, moisture, and graining in different wood species and variations in sanding, staining and finishing techniques, the final stain color may vary from that shown on printed or actual wood color chips and the color cannot be guaranteed.



The standard product may be modified to fit individual job site requirements. Contact your KW representative for assistance.

# GENERAL SPECIFICATIONS/GLASS WALL

## MATA Timber-framed, Paired, Movable Glass Walls

### PART 1 - GENERAL

#### 1.01 DESCRIPTION

##### A. General

1. Furnish and install operable glass partitions and suspension system. Provide all labor, materials, tools, equipment, and services for glass operable walls in accordance with provisions of contract documents.

#### 1.02 RELATED WORK BY OTHERS

- A. Preparation of opening will be by General Contractor. Any deviation of site conditions contrary to approved shop drawings must be called to the attention of the architect.
- B. All header, blocking, support structures, jambs, and track enclosures, as required in 1.04 Quality Assurance.
- C. Prepunching of support structure in accordance with approved shop drawings.
- D. Paint or otherwise finishing all trim and other materials adjoining head and jamb of the partitions.

#### 1.03 SUBMITTALS

- A. Complete shop drawings are to be provided prior to fabrication indicating construction and installation details. Shop drawings must be submitted within 45 days after receipt of signed contract.

#### 1.04 QUALITY ASSURANCE

- A. Preparation of the opening shall conform to the criteria set forth per ASTM E557 Standard Practice for Architectural Application and Installation of Operable Partitions.
- B. Glass shall be clear tempered or laminated per ASTM C1048-97b.

#### 1.05 PRODUCT DELIVERY, STORAGE, AND HANDLING

- A. Proper storage of partitions before installation and continued protection during and after installation will be the responsibility of the General Contractor. IMPORTANT: Room in which panels are stored and/or installed must be temperature and moisture controlled.

#### 1.06 WARRANTY

Carriers and panel frames shall be guaranteed for **two years** and track for **ten years** against defects in material and workmanship. The glass is not covered unless damaged during manufacturing or installation process.

### PART 2 - PRODUCTS

#### 2.01 ACCEPTABLE MANUFACTURERS

- A. Upon compliance with all of the criteria specified in this section, Manufacturers wishing to bid products similar to the product specified must submit to the architect 10 days prior to bidding complete data in support of compliance and a list of three past installations of products similar to those listed. The submitting manufacturer guarantees the proposed substituted product complies with the product specified and as detailed on the drawings.

#### 2.02 MATERIALS

- A. Product to be top supported, center stacked, MATA paired wood-framed glass panels as manufactured by Kwik-Wall Company.
  1. Panels shall be nominally 1-3/4" [43mm] thick and to 48" [1219] in width.
  2. Wood frame of triple laminated solid wood top and bottom rails and stiles that are constructed from custom made veneers with an engineered wood core.
    - a. Basis of design is Red Oak, Maple or Poplar
    - b. Optional species:
      - (1) Cherry, Birch, Pine Walnut and Douglas Fir are available
      - (2) Customer selected species (requires factory approval for manufacturing compatibility)
  3. Vertical lead rails shall contain full height partially recessed rubber bulb seal
  4. Horizontal top & bottom rails shall incorporate continuous contact seals of brown multi-ply vinyl.
  5. Each panel contains a mortise floor pin which extends into a dust covered floor mounted receptor to stabilize and secure each panel.
  6. Glass inserts shall be a choice of
    - a. 1/4" [6] tempered glass (standard)
    - b. 5/16 [8] translucent laminated glass
    - c. Custom glass or acrylic inserts (factory approval required)
  7. Glass shall be glazed using matching solid wood stops on one side of panel.
- B. Weight of the panels shall be approximately:  
1/4" [6] tempered glass: 7.0 lbs. per sq. ft.

5/16" [8] laminated glass: 7.2 lbs. per sq. ft.

#### C. Suspension system:

1. Track shall be of clear anodized architectural grade extruded aluminum alloy 6063-T6. Track design shall provide integral support for adjoining ceiling, soffit, or plenum sound barrier. Track shall be connected to the structural support by pairs of steel hanger rods.
  - a. Each panel shall be supported by one, 4-wheeled carrier. Wheels to be of hardened steel ball bearings encased with molded polymer tires.

#### C.I. Finishes

1. Aluminum track shall be clear anodized
  - a. Optional upgrade: custom anodized or powder coated
2. Wood frame shall be furnished stained and finished with a matte polyurethane.
  - a. Select stain color from standard Kwik-Wall stains:
    - (a) Fruitwood
    - (b) Dark Oak
    - (c) Wheat
    - (d) Cordovan
  - b. Premium stains available at an upcharge to be selected from the Sherwin Williams® Sher-Wood BAC wiping stains Color Selector. Due to variation of wood grains and moisture content, Kwik-Wall will attempt to closely match selected stain colors; however, exact stain matching cannot be guaranteed.
  - c. Custom stains available at an upcharge. Due to variation of wood grains and moisture content, Kwik-Wall will attempt to closely match custom stains, however, exact stain matching cannot be guaranteed.
  - d. Panels may be ordered unfinished for field finishing. Although care is taken to ensure products do not warp or twist, unfinished panels may experience wood warpage due to humidity and heat variations. Customer assumes responsibility for proper finishing and no warranty will be provided.
3. Hardware finish to be (select one)
  - a. Polished Brass (standard)
  - b. Antique Brass (standard)
  - c. Satin Nickel (standard)
  - d. Polished Chrome
  - e. Matte Black
  - f. Oil Rubbed Bronze (a/k/a Rustic Umber)

#### C.II. Available Accessories/Options

1. Hinged closure panel of the same thickness and construction as the basic panels, one-way swing (select as required):
  - a. Hoppe Munchen style handle
    - (1) Optional upgrade: Lock to be keyed for Schlage brand
2. Floor Locks
  - a. Adams Rite thumb turn floor lock
  - b. Adams Rite keyed floor lock
3. Optional glass etching

#### 2.03 OPERATION

- A. Panels shall be manually moved from the storage area, positioned in the opening, and either edge activated or face activated floorbolts set.
- B. Final partition closure to be by (select one):
  1. Hinged Closure with handle
  2. Overlapping the opening
  3. 2" [51] trail gap
- C. Stack/Store Panels
  1. Retract floorbolt and move to storage area.

### PART 3 - EXECUTION

- A. Installation. The complete installation of the glass wall system shall be by an authorized factory-trained installer and be in strict accordance with the approved shop drawings and manufacturer's standard printed specifications, instructions, and recommendations.
- B. Cleaning
  1. All track and panel surfaces shall be wiped clean and free of handprints, grease, and soil per specific instructions.
  2. Optional specialty glass requires special cleaning per instructions provided.
  3. Cartoning and other installation debris shall be removed to on-site waste collection area, provided by others.
- C. Training

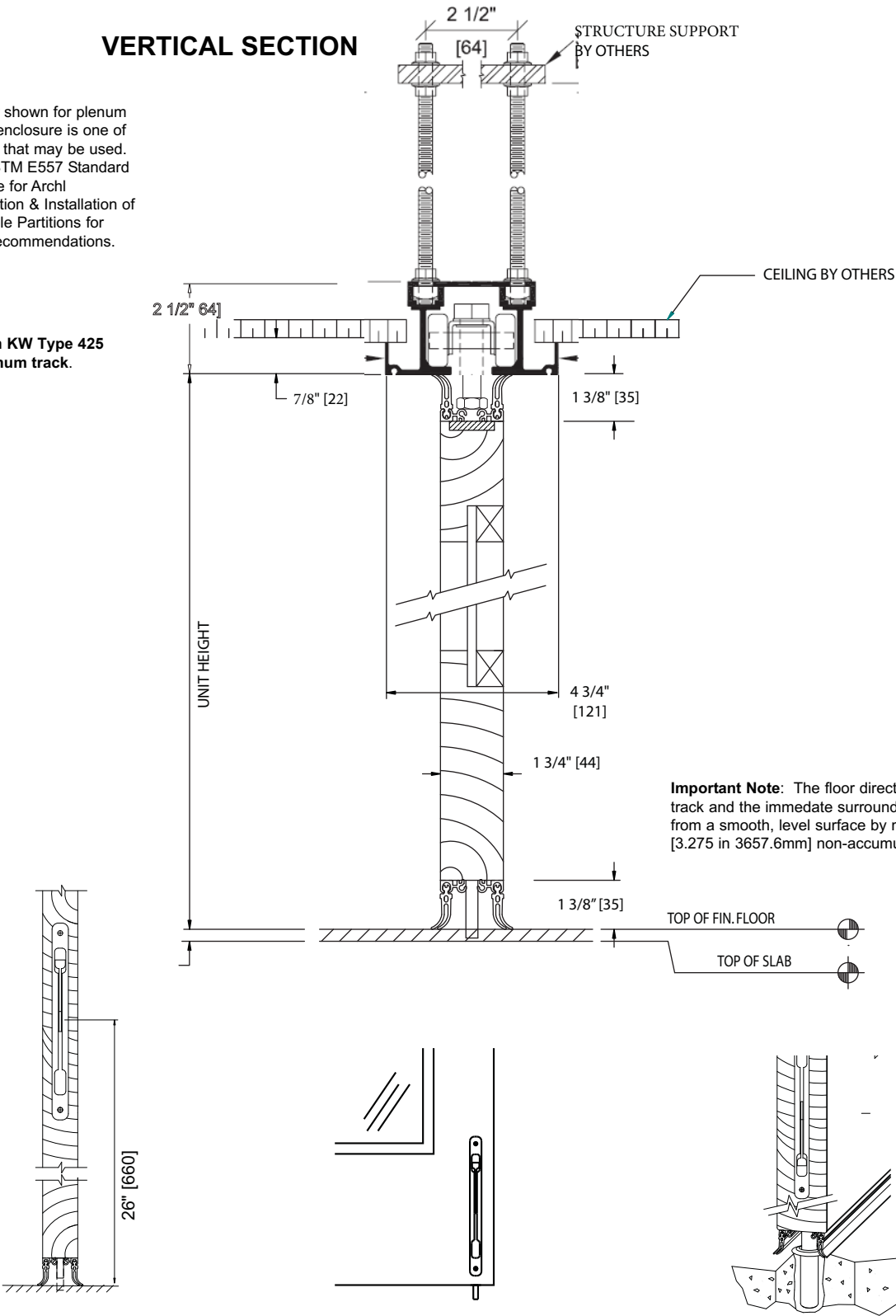


- 1. Installer shall demonstrate proper operation and maintenance procedures to owner's representative.
- 2. Owners manuals shall be provided to owner's representative.

VERTICAL SECTION

Header shown for plenum sound enclosure is one of several that may be used. See ASTM E557 Standard Practice for Archl Application & Installation of Operable Partitions for other recommendations.

Shown KW Type 425 Aluminum track.



**Important Note:** The floor directly below the overhead track and the immediate surrounding area should not vary from a smooth, level surface by more than 1/8" in 12'0" [3.275 in 3657.6mm] non-accumulative.

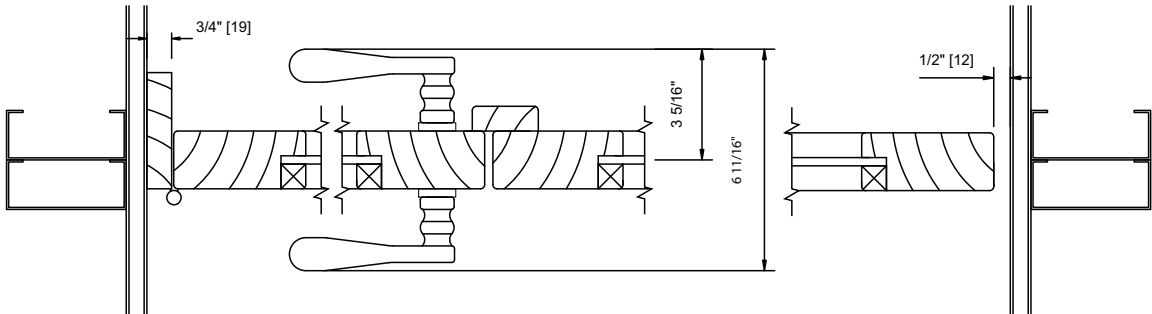


No Scale

MATA Timber-framed, Paired, Movable Glass Walls  
DETAILS

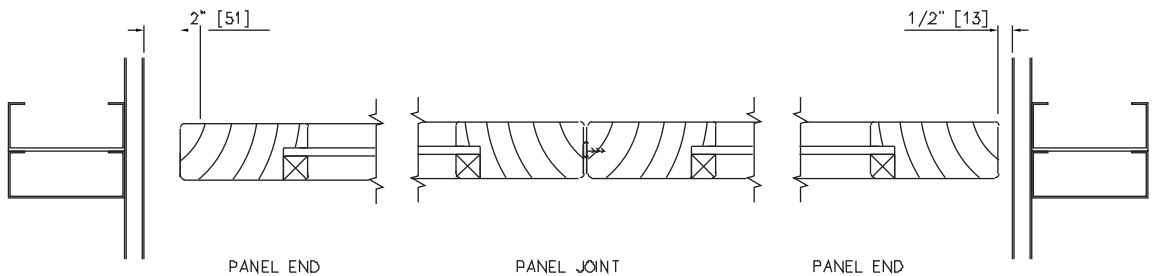
HORIZONTAL SECTION

Hinged Closure Panel with Lead Jamb

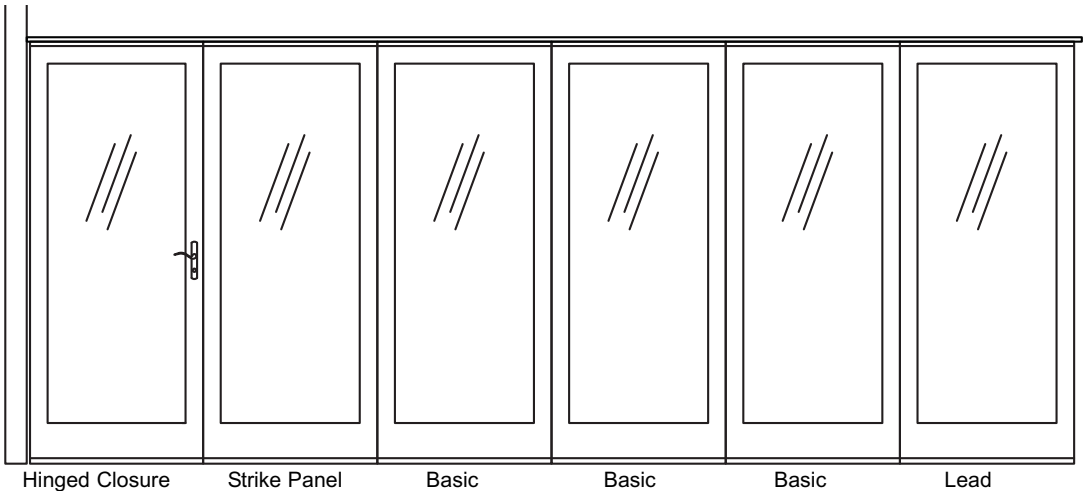


Width Options: 16" - 48" [406-1219]

For Partitions Without Closures



ELEVATION



Hinged Closure  
Minimum 16" [406]  
Maximum 48" [1219]

Strike Panel

Basic

Basic

Basic

Lead

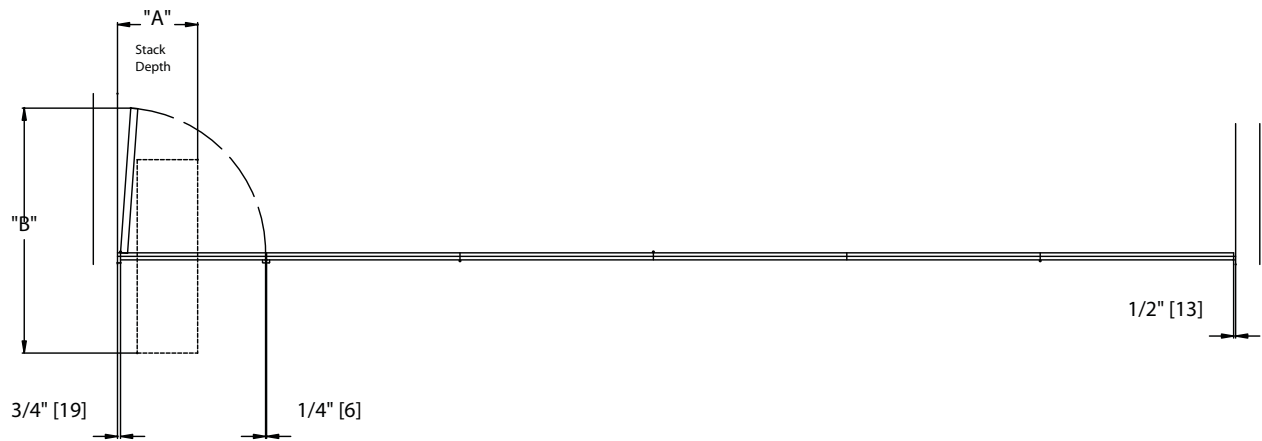


# MATA Timber-framed, Paired, Movable Glass Walls

## Stack Dimensions

The following stack depth and width dimensions are based on standard construction. Optional constructions may increase stack depth requirements.

### Single Opening, using a hinged closure panel.



#### A Stack Depth:

Type 425 track: 3" [76] per panel + 7" [177] for hinged closure handle

#### B Stack Width:

Hinged Closure Panel width + 1/2 maximum panel width + 4" [102] finger clearance

**Corporate Headquarters:**

Kwik-Wall Company  
4650 Industrial Ave.  
Springfield, IL 62705  
271-522-5553  
E-mail: [info@kwik-wall.com](mailto:info@kwik-wall.com)  
Website: [www.kwik-wall.com](http://www.kwik-wall.com)

The manufacturer reserves the right to improve and  
change product without notice.