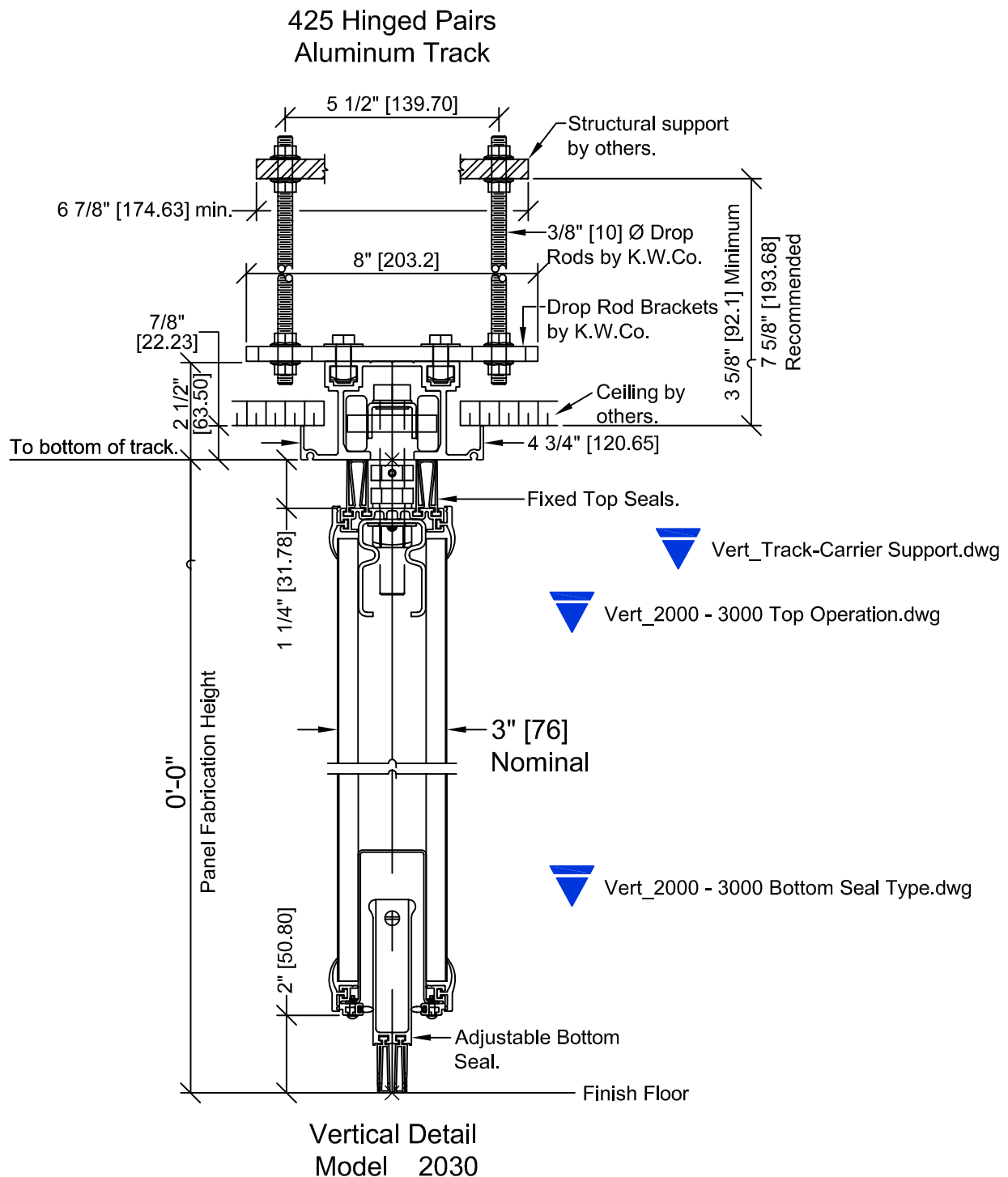
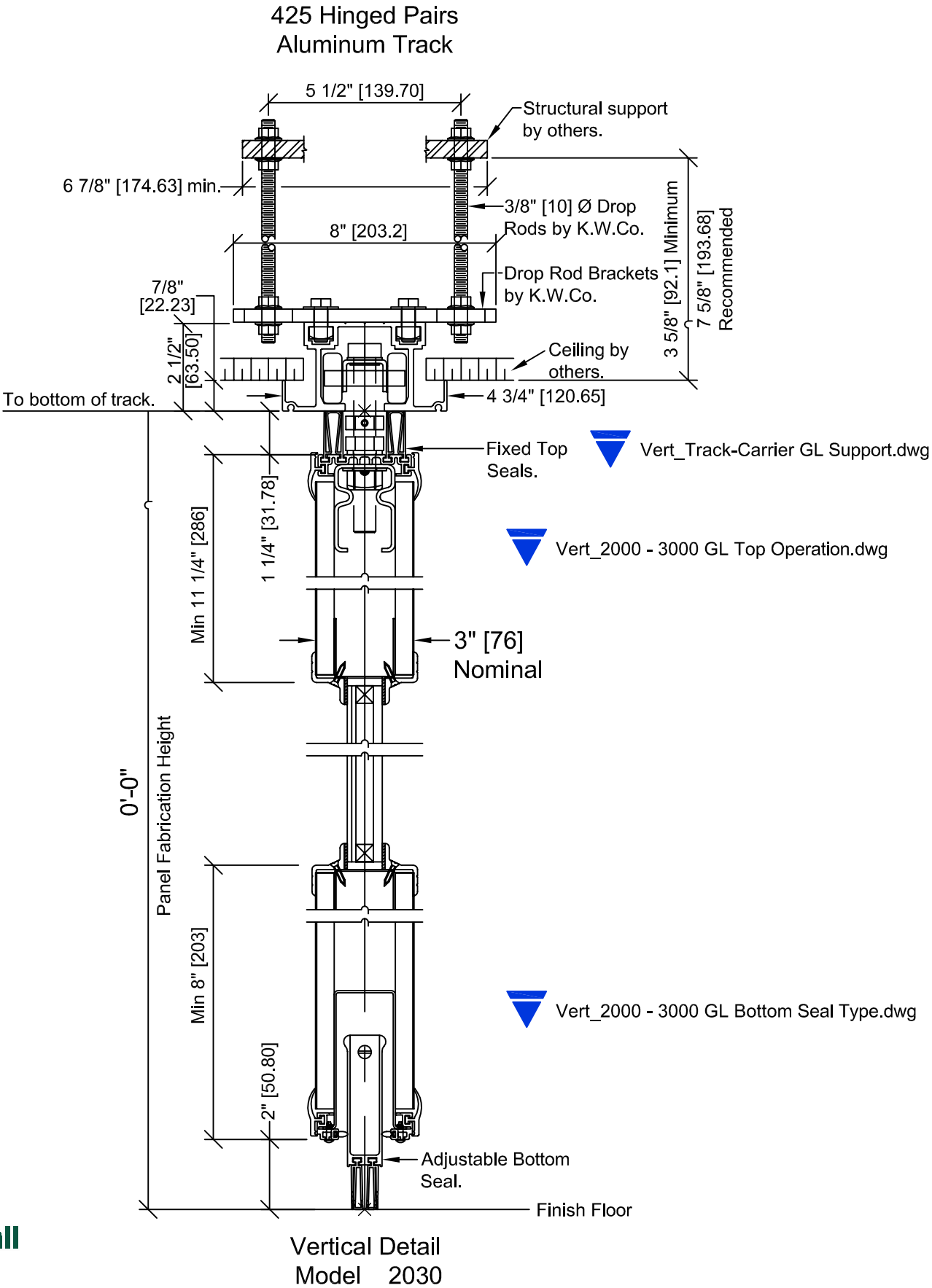


NOTE: Copy and Paste these Blocks into project. Or Insert the blocks per the Noted CAD name from Zip. Use the Triangle Drop-down Menus to meet your project requirement. Call Local Distributor if you have questions.



NOTE: Copy and Paste these Blocks into project. Or Insert the blocks per the Noted CAD name from Zip. Use the Triangle Drop-down Menus to meet your project requirement. Call Local Distributor if you have questions.



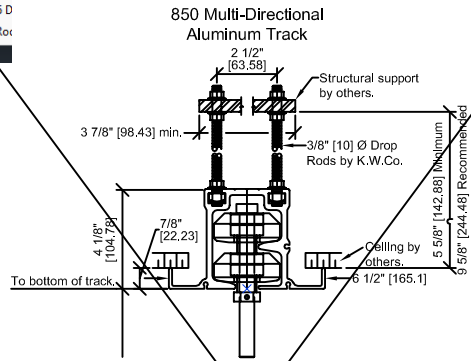


## Multi-Directional Track Support Options

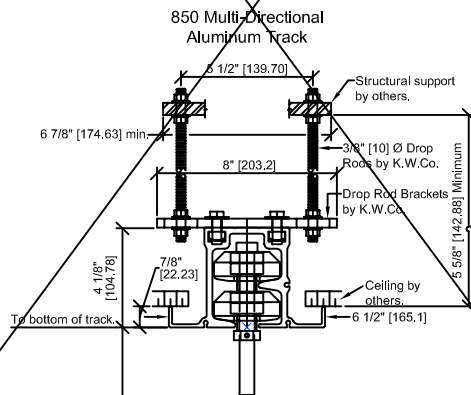
## Hinged Pair (Single Carrier) Track Support Options

### 850 Aluminum Track - up to 850 lb weight per Carrier: \*Max ht 16'-2" (See Weight Chart)

**850 Aluminum Track - 2.5" Drop Rod to Structure**

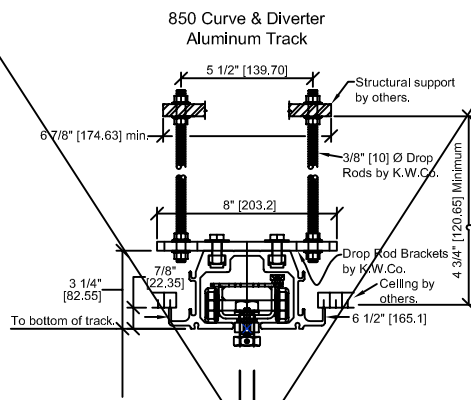


**850 Aluminum Track - 5.5" Drop Rod to Structure**

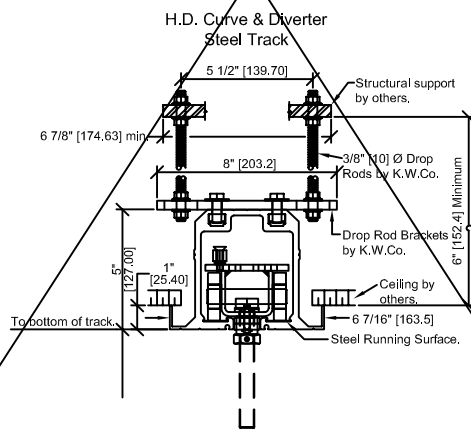


### 850 C&D Track - up to 850 lb weight per Carrier: \*Max ht 30'-0" (See Weight Chart)

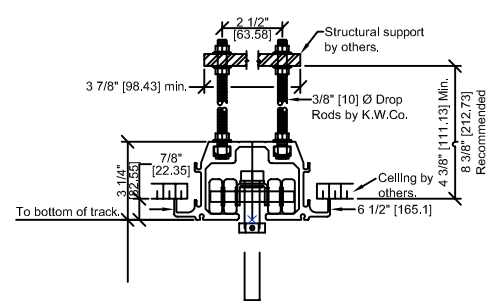
**850 C&D and Steel Track - 5.5" Drop Rod to Structure**



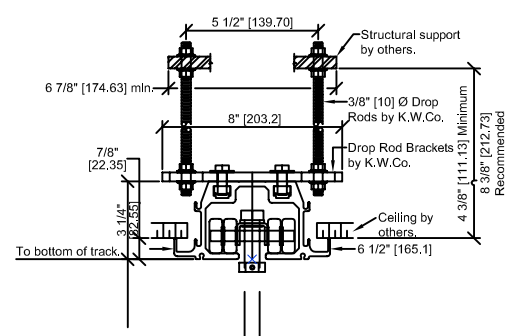
**HD850 C&D Track - 5.5" Drop Rod to Structure**



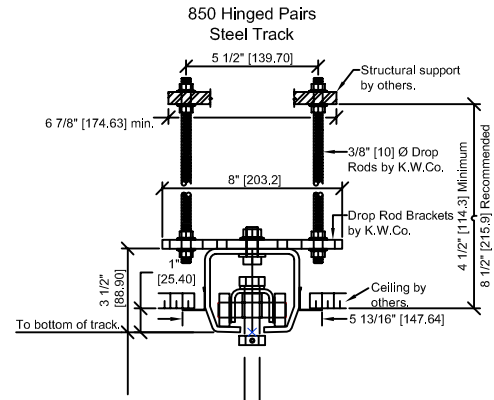
### 850 Hinged Pairs Aluminum Track



### 850 Hinged Pairs Aluminum Track



### 850 Steel Track - up to 850 lb weight per Carrier: \*Max ht 16'-2" (See Weight Chart)



**425 Aluminum Track - up to 525 lb weight per Carrier**  
**850 Aluminum Track - up to 850 lb weight per Carrier**  
**850 Steel Track - up to 850 lb weight per Carrier**

\* Estimated panel weights are for intermediate panels. Weight may vary due to substrate, size, or function of panel. Add 105 lbs [47kg] for pass door. Add 6 lbs [3kg] per lin ft height for expanders. Add 3.5 to 8 lbs [1.6 to 3.6kg] per lin ft for track.

#### Standard Acoustical Substrate:

- 2000 (3") 42<sup>STC</sup> (6.5 lb./ft<sup>2</sup>)
- 2000 (3") 45<sup>STC</sup> (8.5 lb./ft<sup>2</sup>)
- 2000 (3") 49<sup>STC</sup> (9 lb./ft<sup>2</sup>)
- 2000 (3") 50<sup>STC</sup> (9 lb./ft<sup>2</sup>)

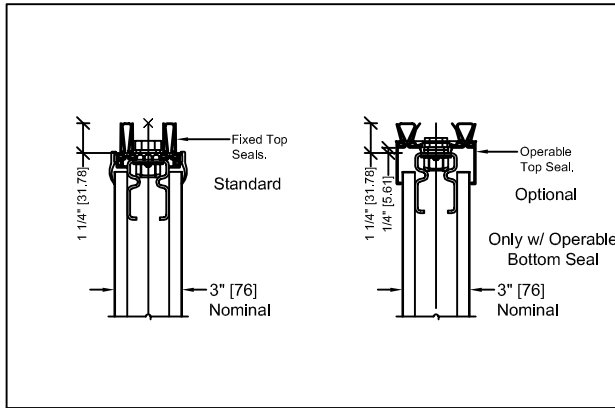
#### Optional Steel Skins:

- 2000 (3") 49<sup>STC</sup> (10.9 lb./ft<sup>2</sup>)
- 2000 (3") 51<sup>STC</sup> (11 lb./ft<sup>2</sup>)

▼ Vert\_Track-Carrier Support.dwg

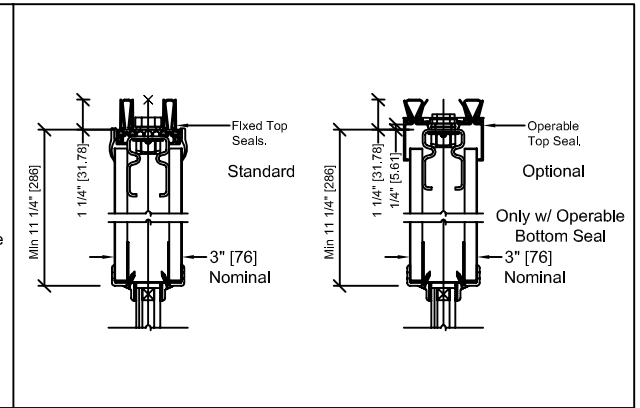
▼ Vert\_Track-Carrier GL Support.dwg

Model 2000 - Top Seal Condition



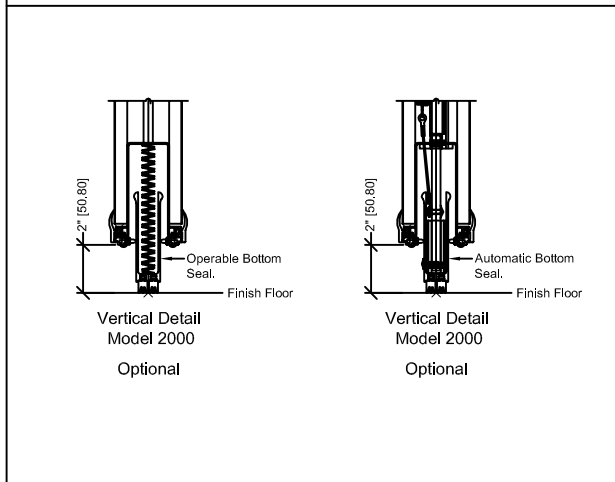
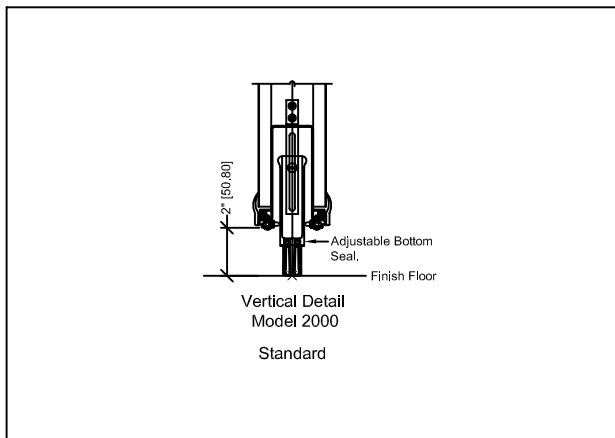
▼ Vert\_2000 - 3000 Top Operation.dwg

Model 2000 - Top Seal Condition



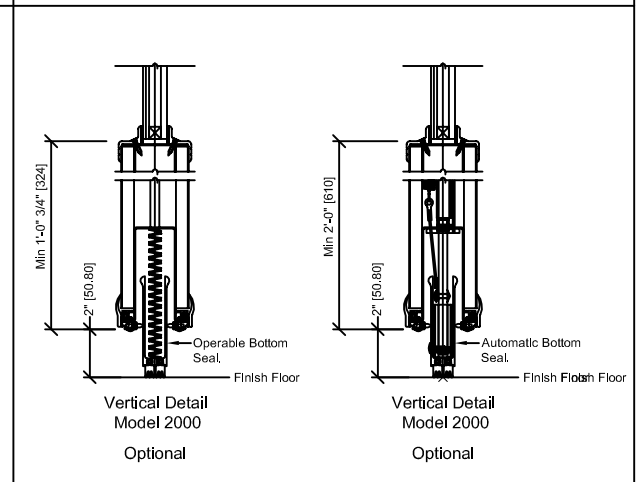
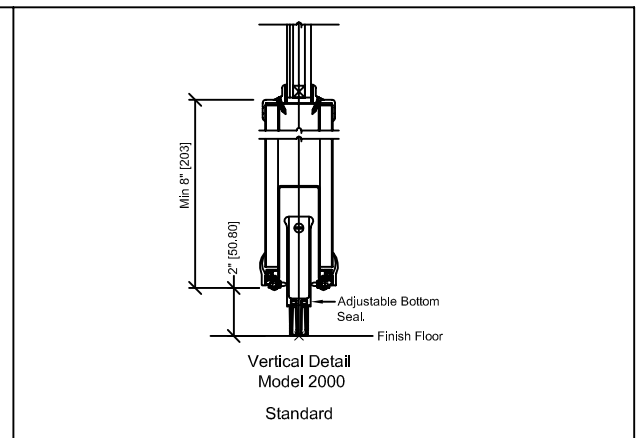
▼ Vert\_2000 - 3000 GL Top Operation.dwg

Model 2000 - Bottom Seal Condition

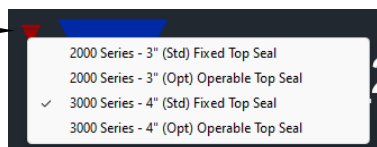


▼ Vert\_2000 - 3000 Bottom Seal Type.dwg

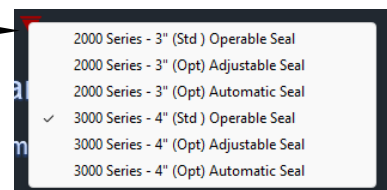
Model 2000 - Bottom Seal Condition



▼ Vert\_2000 - 3000 GL Bottom Seal Type.dwg

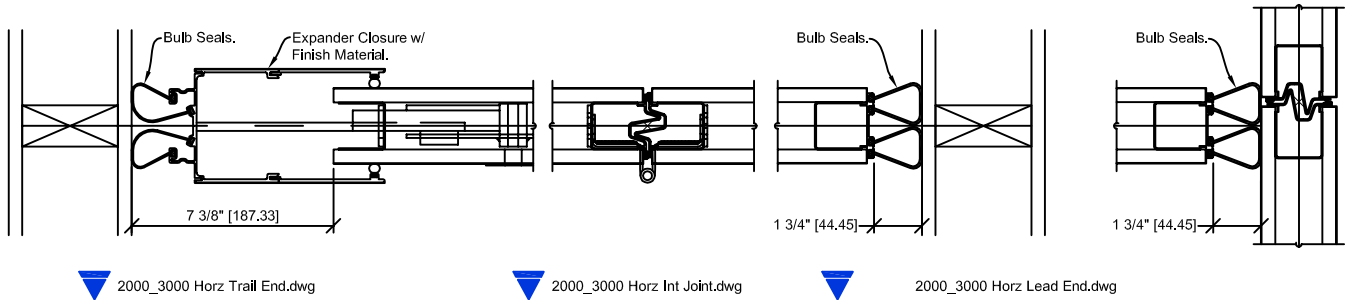


Select Triangle for Drop-down Menu

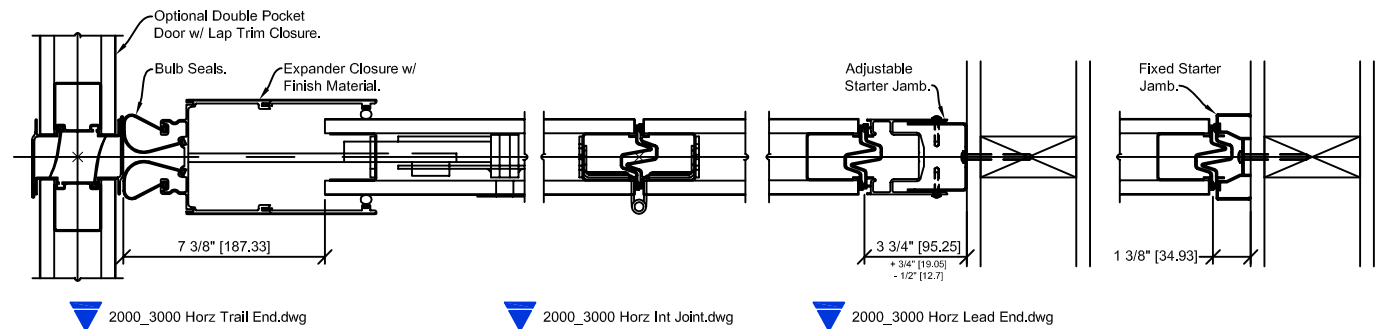


Select Triangle for Drop-down Menu

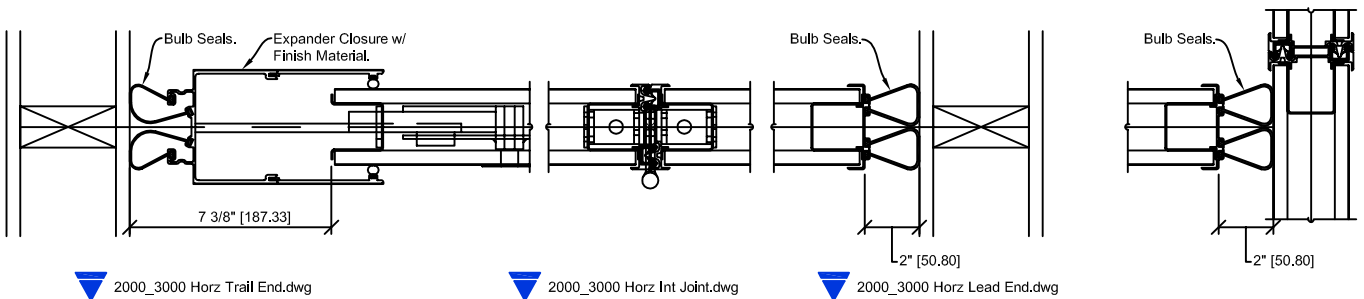




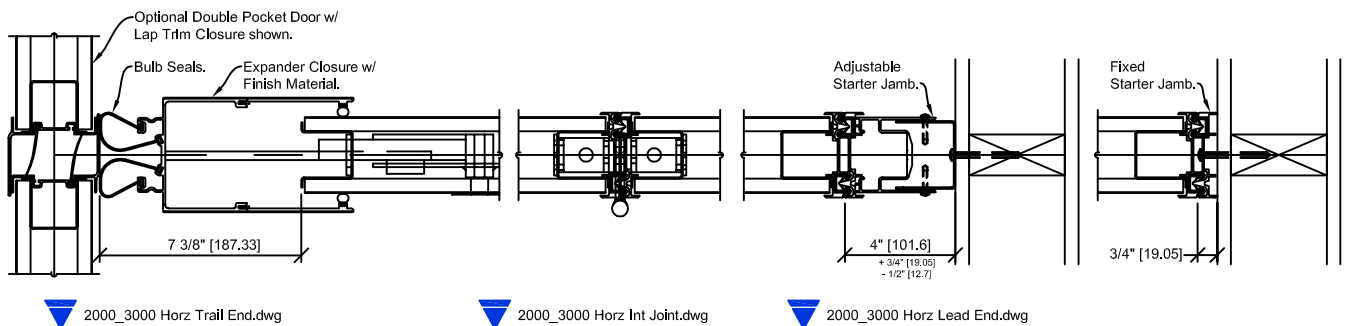
### 2000 Trimless Sealing to Wall Option



### 2000 Trimless Sealing to Pocket Door Option

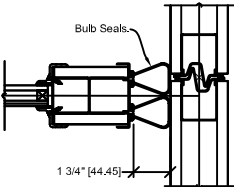


### 2000 Cap "Trimmed" Sealing to Wall Option

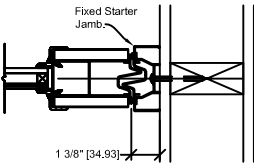


### 2000 Cap "Trimmed" Sealing to Pocket Door Option

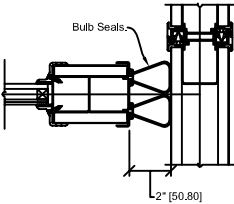
Alternate Lead Conditions



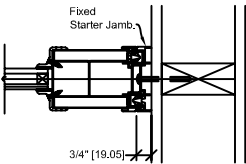
2000\_3000 GL Horiz Lead End.dwg



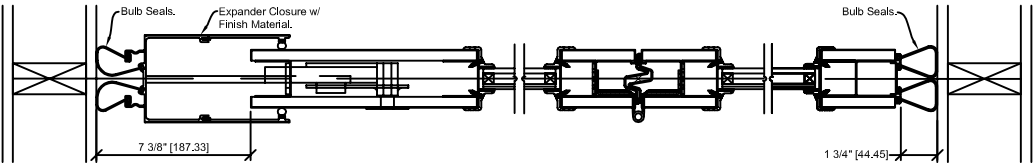
2000\_3000 GL Horiz Lead End.dwg



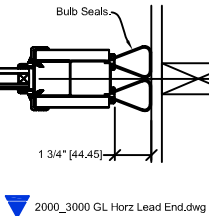
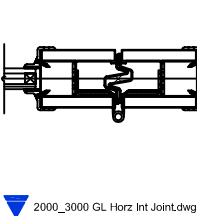
2000\_3000 GL Horiz Lead End.dwg



2000\_3000 GL Horiz Lead End.dwg

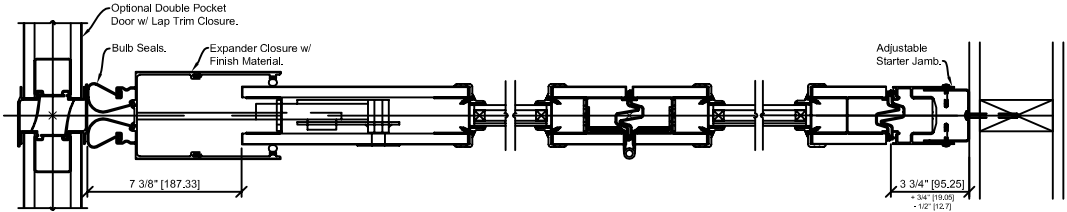


2000\_3000 GL Horiz Trail End.dwg



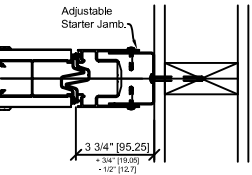
2000\_3000 GL Horiz Lead End.dwg

2000GL Trimless Sealing to Wall Option



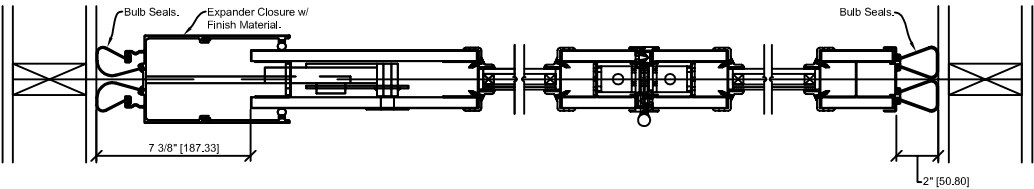
2000\_3000 GL Horiz Trail End.dwg

2000\_3000 GL Horiz Int Joint.dwg



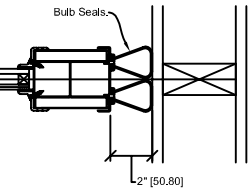
2000\_3000 GL Horiz Lead End.dwg

2000GL Trimless Sealing to Pocket Door Option



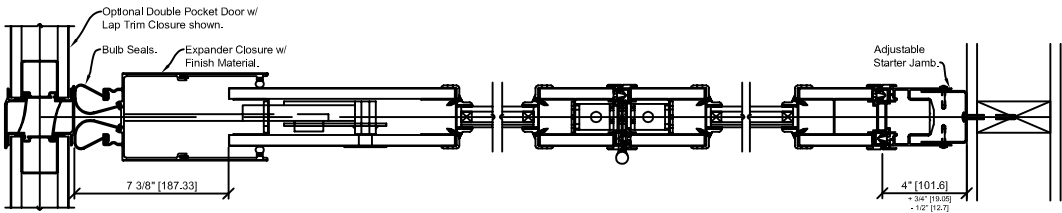
2000\_3000 GL Horiz Trail End.dwg

2000\_3000 GL Horiz Int Joint.dwg



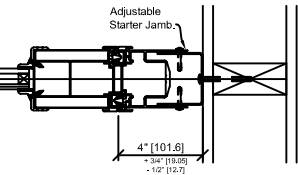
2000\_3000 GL Horiz Lead End.dwg

2000GL Cap "Trimmed" Sealing to Wall Option



2000\_3000 GL Horiz Trail End.dwg

2000\_3000 GL Horiz Int Joint.dwg



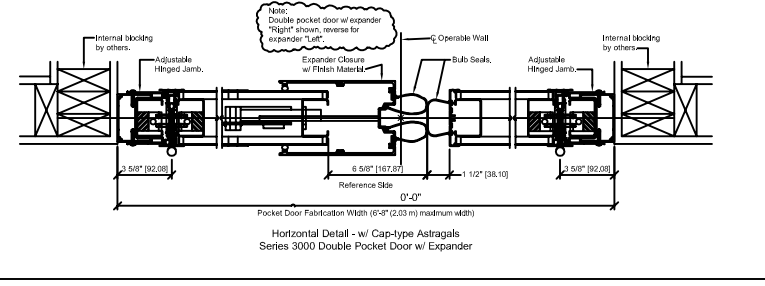
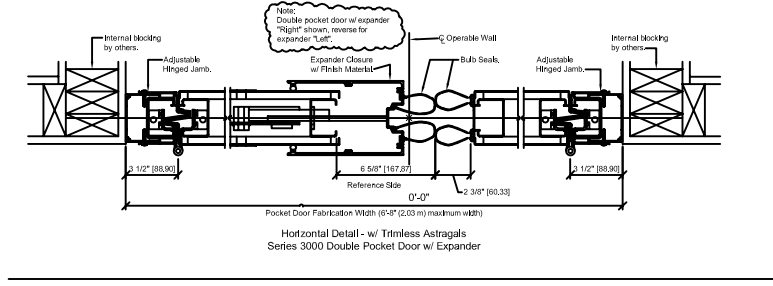
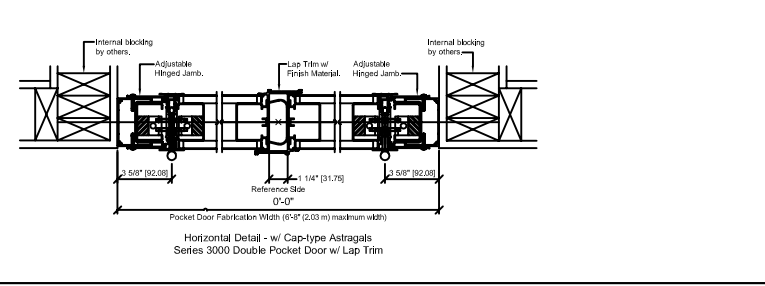
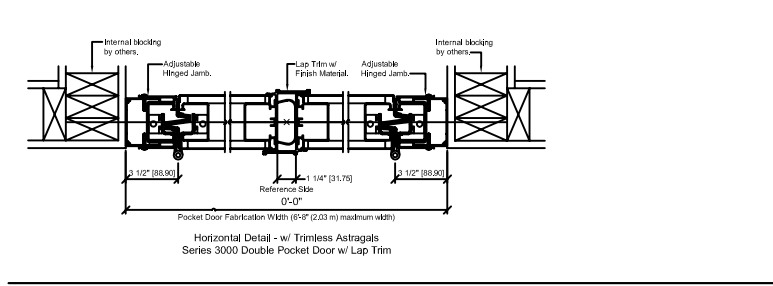
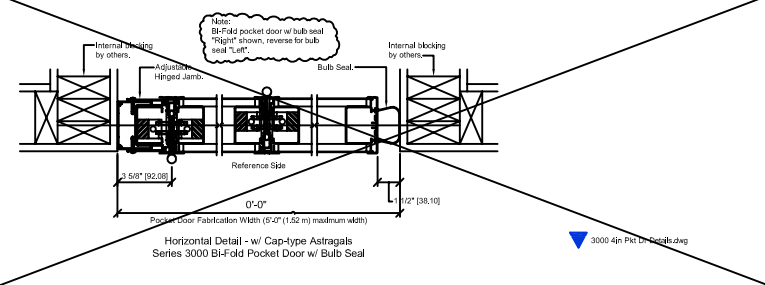
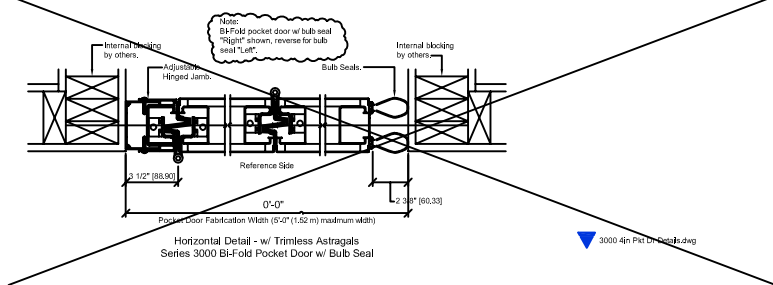
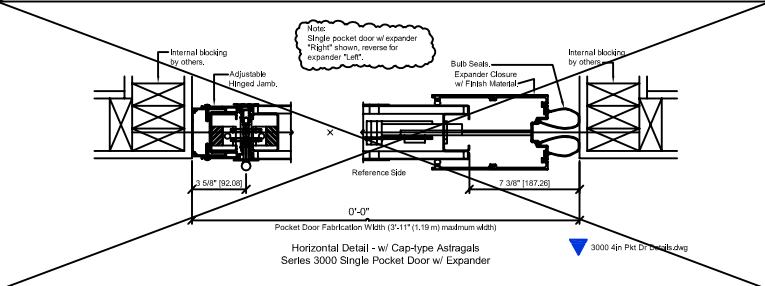
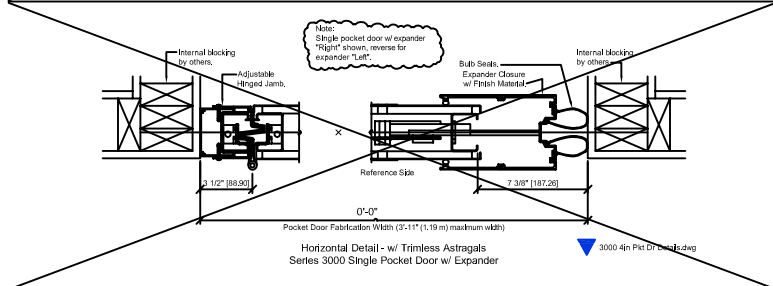
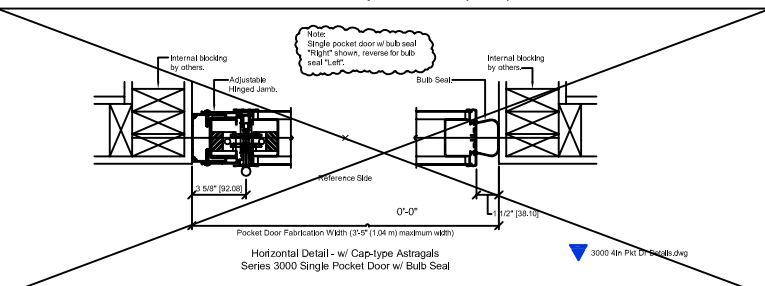
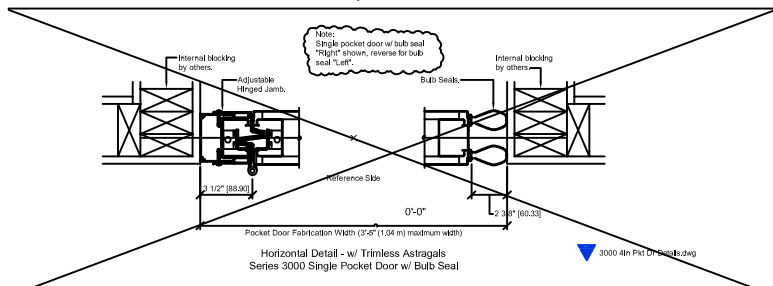
2000\_3000 GL Horiz Lead End.dwg

2000GL Cap "Trimmed" Sealing to Pocket Door Option



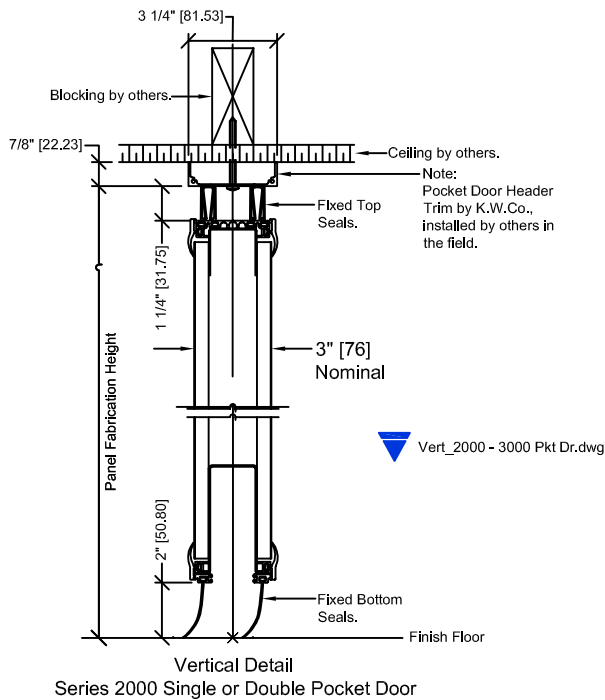
## Pocket Door Options

## Pocket Door Options - CAP (TRIM)

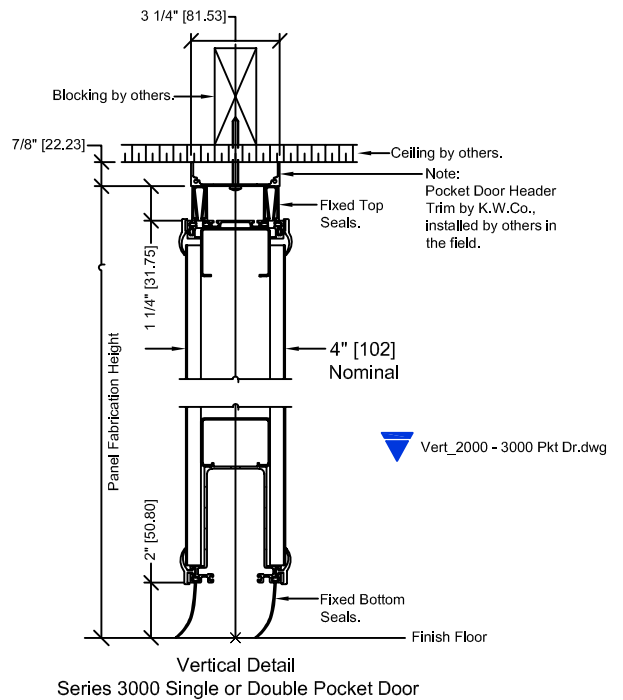




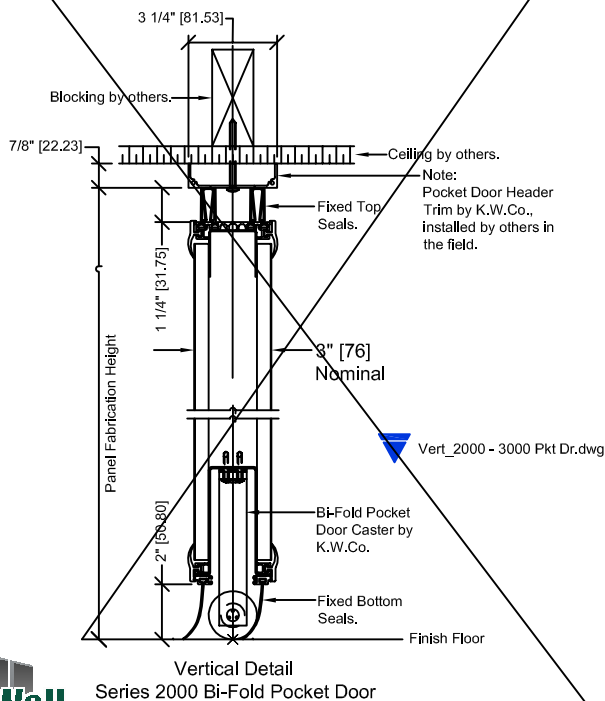
NOTE: Copy and Paste these Blocks into project. Or Insert the blocks per the Noted CAD name from Zip. Use the Triangle Drop-down Menus to meet your project requirement. Call Local Distributor if you have questions.



NOTE: Copy and Paste these Blocks into project. Or Insert the blocks per the Noted CAD name from Zip. Use the Triangle Drop-down Menus to meet your project requirement. Call Local Distributor if you have questions.



NOTE: Copy and Paste these Blocks into project. Or Insert the blocks per the Noted CAD name from Zip. Use the Triangle Drop-down Menus to meet your project requirement. Call Local Distributor if you have questions.



NOTE: Copy and Paste these Blocks into project. Or Insert the blocks per the Noted CAD name from Zip. Use the Triangle Drop-down Menus to meet your project requirement. Call Local Distributor if you have questions.

