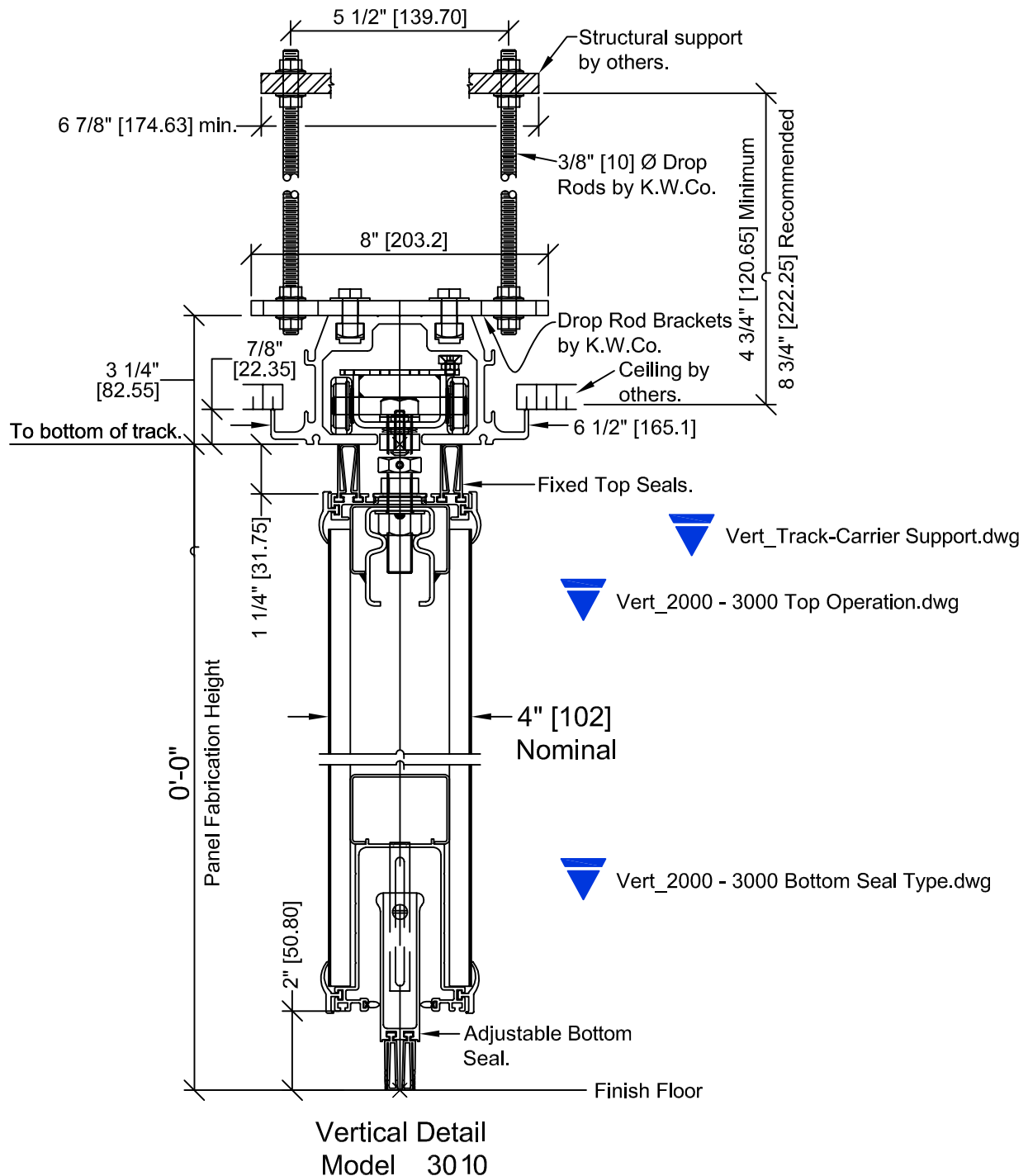


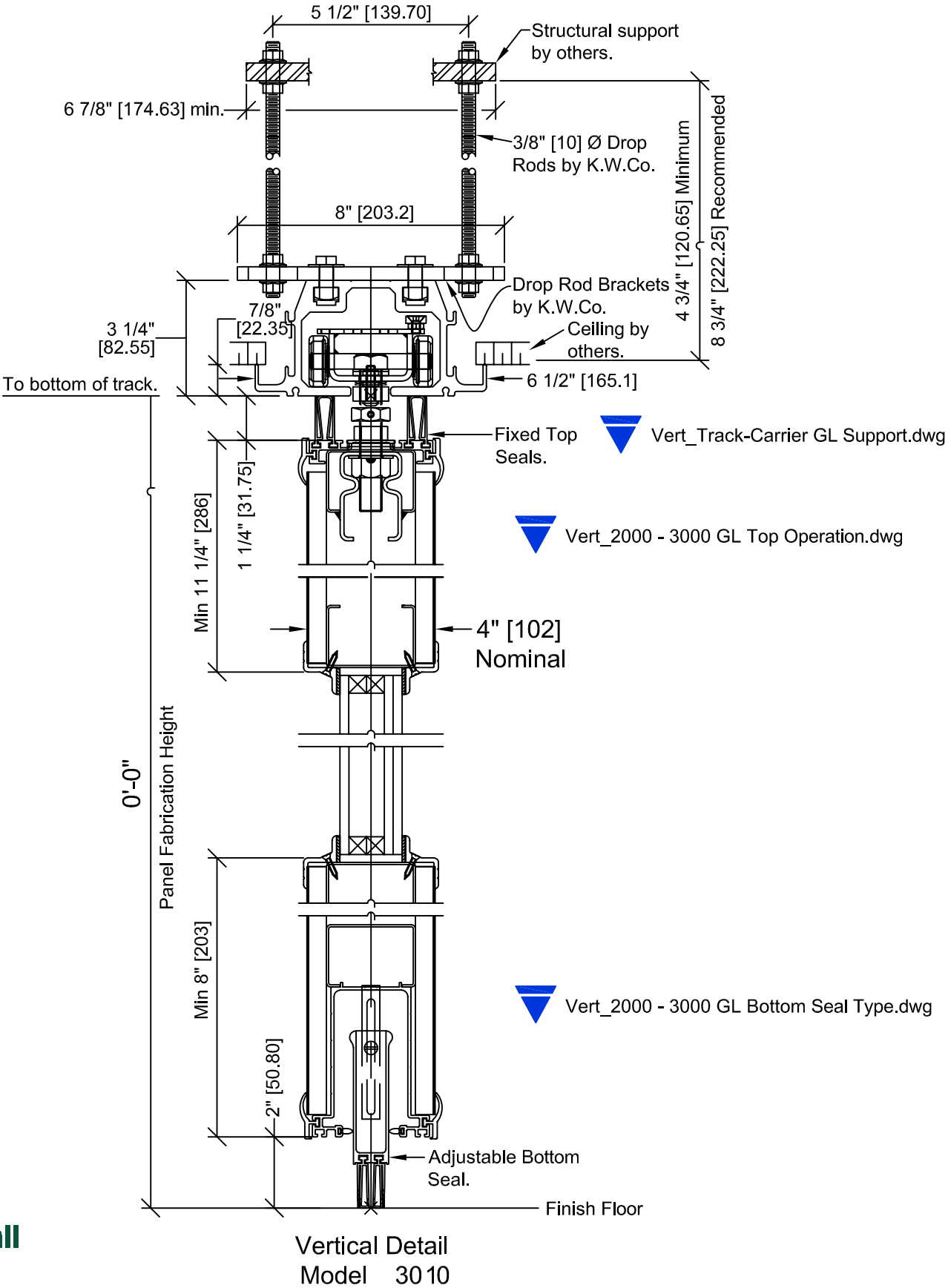
NOTE: Copy and Paste these Blocks into project. Or Insert the blocks per the Noted CAD name from Zip. Use the Triangle Drop-down Menus to meet your project requirement. Call Local Distributor if you have questions.

### 850 Curve & Diverter Aluminum Track



NOTE: Copy and Paste these Blocks into project. Or Insert the blocks per the Noted CAD name from Zip. Use the Triangle Drop-down Menus to meet your project requirement. Call Local Distributor if you have questions.

850 Curve & Diverter  
Aluminum Track

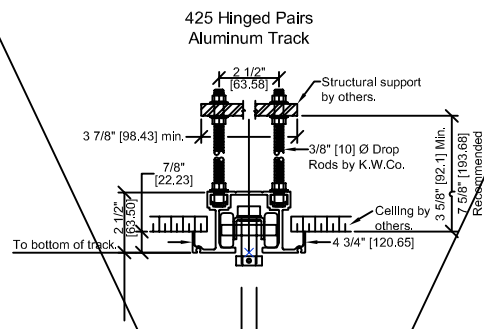
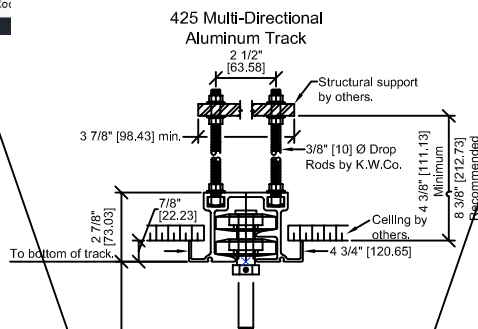


## Multi-Directional Track Support Options

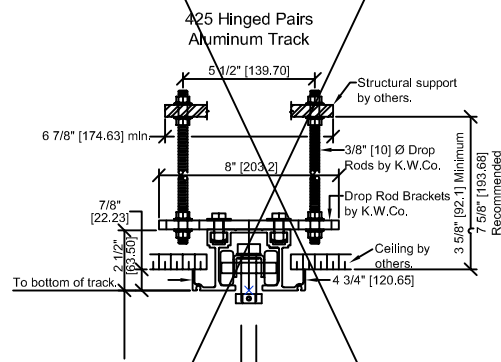
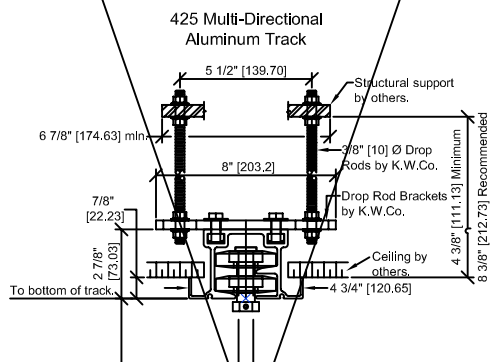
## Hinged Pair (Single Carrier) Track Support Options

### 425 Aluminum Track - up to 525 lb weight per Carrier: \*Max ht 14'-2" (See Weight Chart)

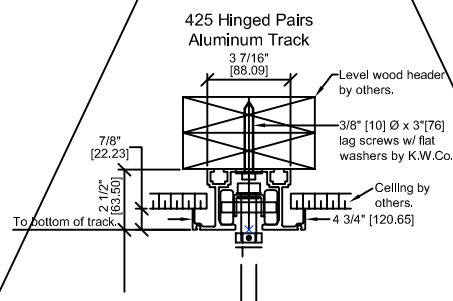
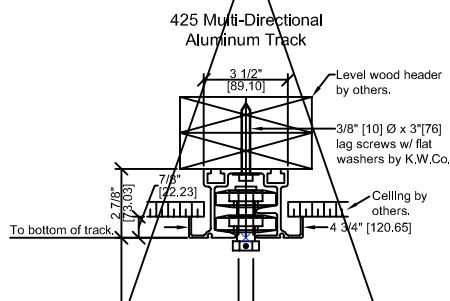
**425 Aluminum Track - 2.5" Drop Rod to Structure**



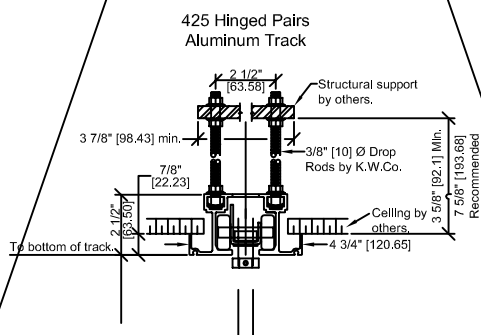
**425 Aluminum Track - 5.5" Drop Rod to Structure**



**425 Aluminum Track - Direct Attachment to Structure**



**450 C&D Track - 2.5" Drop Rod to Structure**



**425 Aluminum Track - up to 525 lb weight per Carrier**  
**850 Aluminum Track - up to 850 lb weight per Carrier**  
**850 Steel Track - up to 850 lb weight per Carrier**

\* Estimated panel weights are for intermediate panels. Weight may vary due to substrate, size, or function of panel. Add 105 lbs [47kg] for pass door. Add 6 lbs [3kg] per lin ft height for expanders. Add 3.5 to 8 lbs [1.6 to 3.6kg] per lin ft for track.

Standard Acoustical Substrate:

- 3000 (4") 43<sup>STC</sup> (5.9 lb./ft<sup>2</sup>)
- 3000 (4") 46<sup>STC</sup> (6.6 lb./ft<sup>2</sup>)
- 3000 (4") 48<sup>STC</sup> (7.5 lb./ft<sup>2</sup>)
- 3000 (4") 50<sup>STC</sup> (9 lb./ft<sup>2</sup>)

Optional Steel Skins:

- 3000 (4") 43<sup>STC</sup> (8.5 lb./ft<sup>2</sup>)
- 3000 (4") 50<sup>STC</sup> (9.5 lb./ft<sup>2</sup>)
- 3000 (4") 52<sup>STC</sup> (9.5 lb./ft<sup>2</sup>)
- 3000 (4") 56<sup>STC</sup> (12.9 lb./ft<sup>2</sup>)

▼ Vert\_Track-Carrier Support.dwg

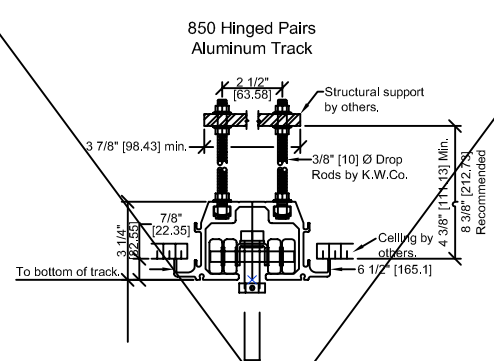
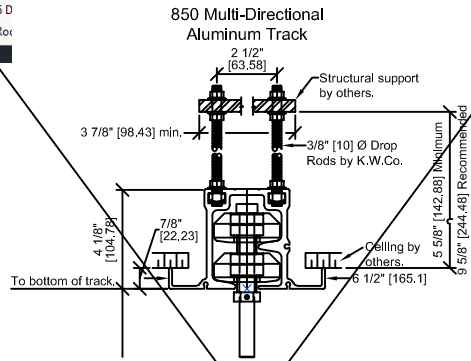
▼ Vert\_Track-Carrier GL Support.dwg

## Multi-Directional Track Support Options

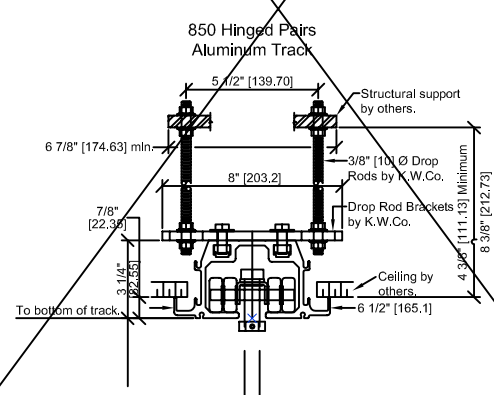
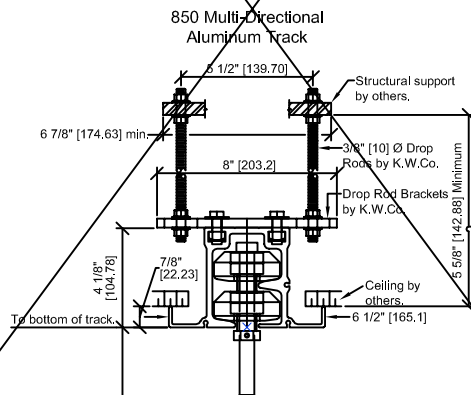
## Hinged Pair (Single Carrier) Track Support Options

**850 Aluminum Track - up to 850 lb weight per Carrier: \*Max ht 16'-2" (See Weight Chart)**

**850 Aluminum Track - 2.5" Drop Rod to Structure**



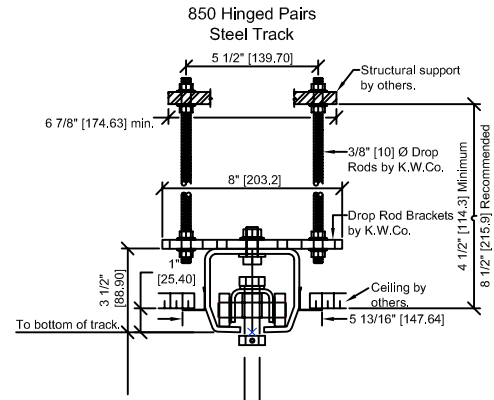
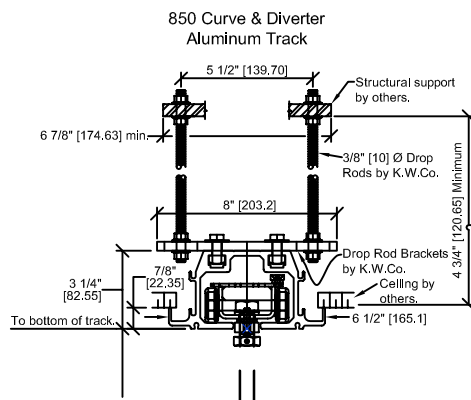
**850 Aluminum Track - 5.5" Drop Rod to Structure**



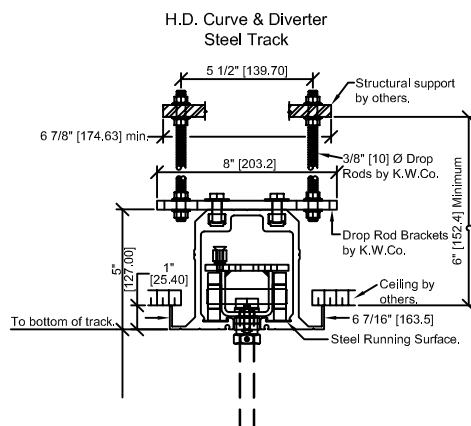
**850 C&D Track - up to 850 lb weight per Carrier: \*Max ht 30'-0" (See Weight Chart)**

**850 Steel Track - up to 850 lb weight per Carrier: \*Max ht 16'-2" (See Weight Chart)**

**850 C&D and Steel Track - 5.5" Drop Rod to Structure**



**HD850 C&D Track - 5.5" Drop Rod to Structure**



**425 Aluminum Track - up to 525 lb weight per Carrier**  
**850 Aluminum Track - up to 850 lb weight per Carrier**  
**850 Steel Track - up to 850 lb weight per Carrier**

\* Estimated panel weights are for intermediate panels. Weight may vary due to substrate, size, or function of panel. Add 105 lbs [47kg] for pass door. Add 6 lbs [3kg] per lin ft height for expanders. Add 3.5 to 8 lbs [1.6 to 3.6kg] per lin ft for track.

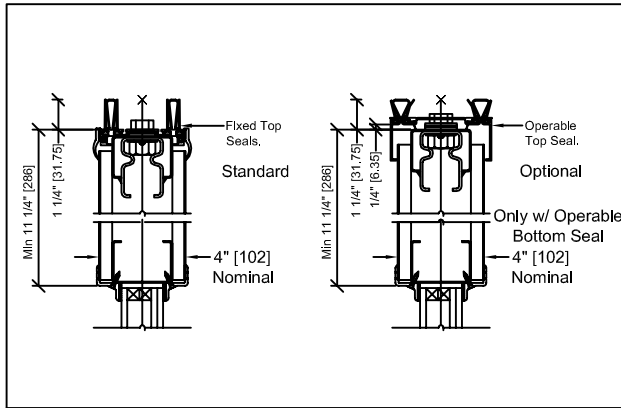
Standard Acoustical Substrate:  
• 3000 (4") 43<sup>STC</sup> (5.9 lb./ft<sup>2</sup>)  
• 3000 (4") 46<sup>STC</sup> (6.6 lb./ft<sup>2</sup>)  
• 3000 (4") 48<sup>STC</sup> (7.5 lb./ft<sup>2</sup>)  
• 3000 (4") 50<sup>STC</sup> (9 lb./ft<sup>2</sup>)

Optional Steel Skins:  
• 3000 (4") 46<sup>STC</sup> (8.5 lb./ft<sup>2</sup>)  
• 3000 (4") 50<sup>STC</sup> (9.5 lb./ft<sup>2</sup>)  
• 3000 (4") 52<sup>STC</sup> (9.5 lb./ft<sup>2</sup>)  
• 3000 (4") 56<sup>STC</sup> (12.9 lb./ft<sup>2</sup>)

▼ Vert\_Track-Carrier Support.dwg

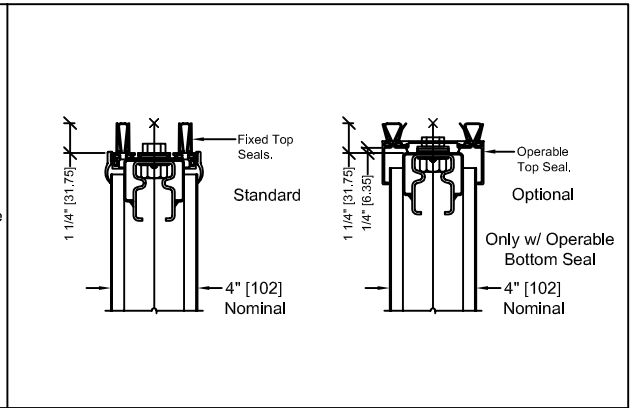
▼ Vert\_Track-Carrier GL Support.dwg

Model 3000 - GL Top Seal Condition



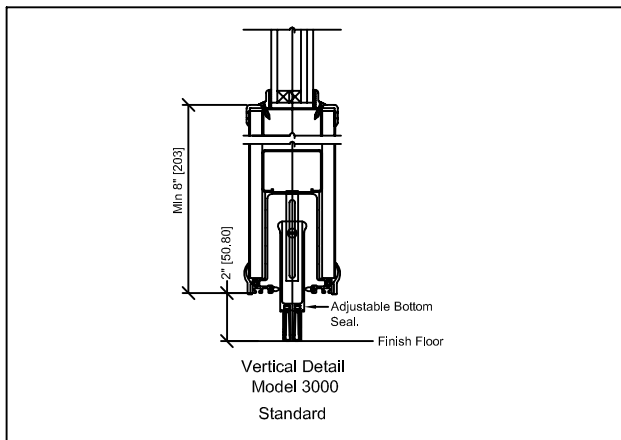
▼ Vert\_2000 - 3000 GL Top Operation.dwg

Model 3000 - Top Seal Condition



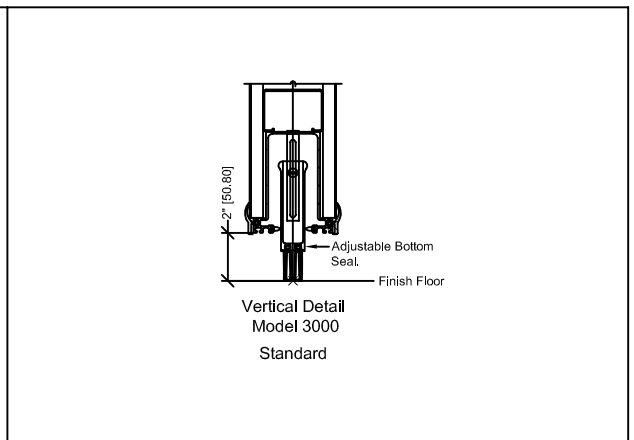
▼ Vert\_2000 - 3000 Top Operation.dwg

Model 3000 - GL Bottom Seal Condition

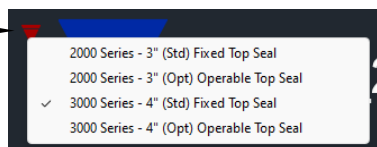
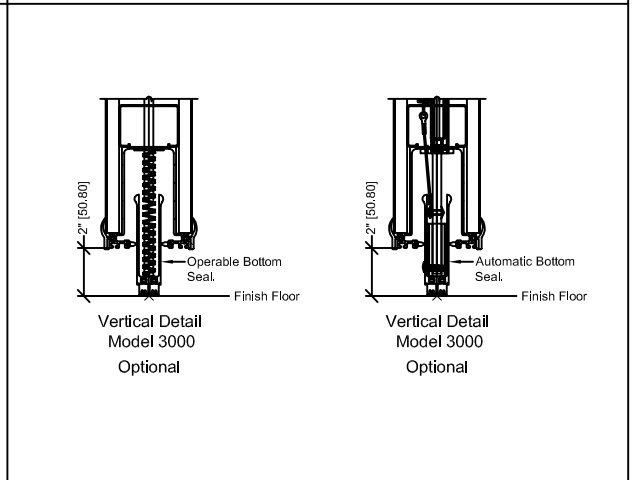
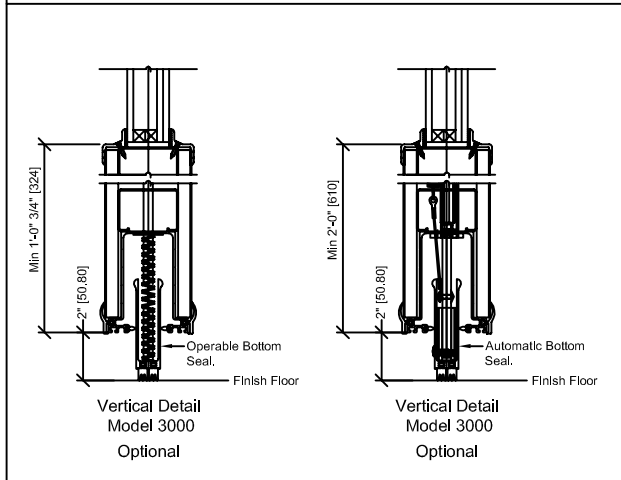


▼ Vert\_2000 - 3000 GL Bottom Seal Type.dwg

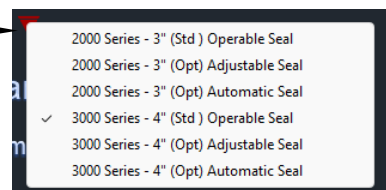
Model 3000 - Bottom Seal Condition



▼ Vert\_2000 - 3000 Bottom Seal Type.dwg

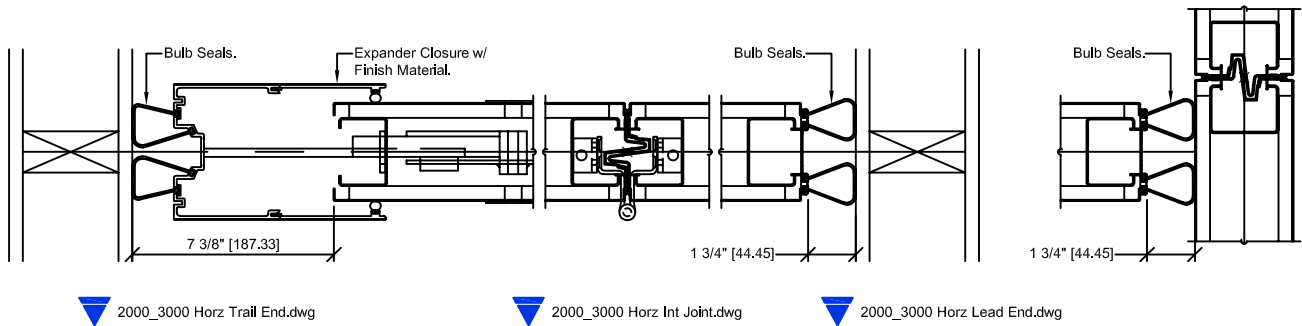


Select Triangle for Drop-down Menu

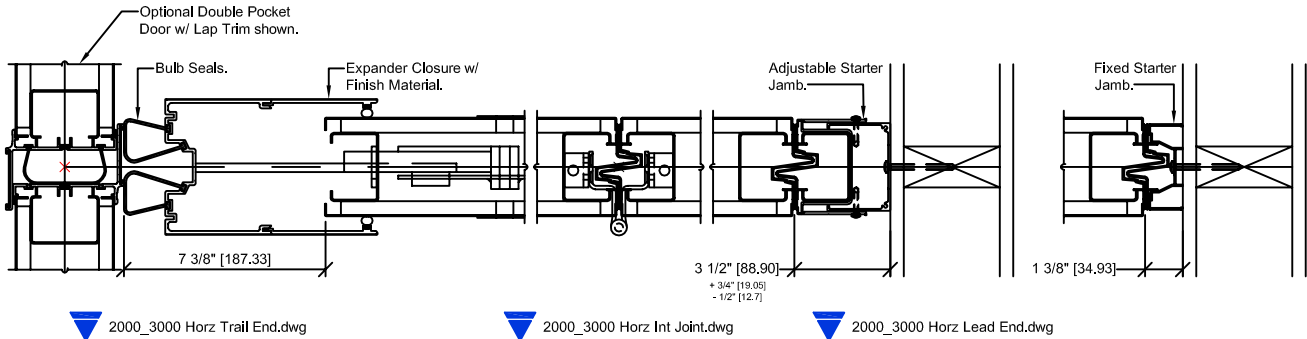


Select Triangle for Drop-down Menu

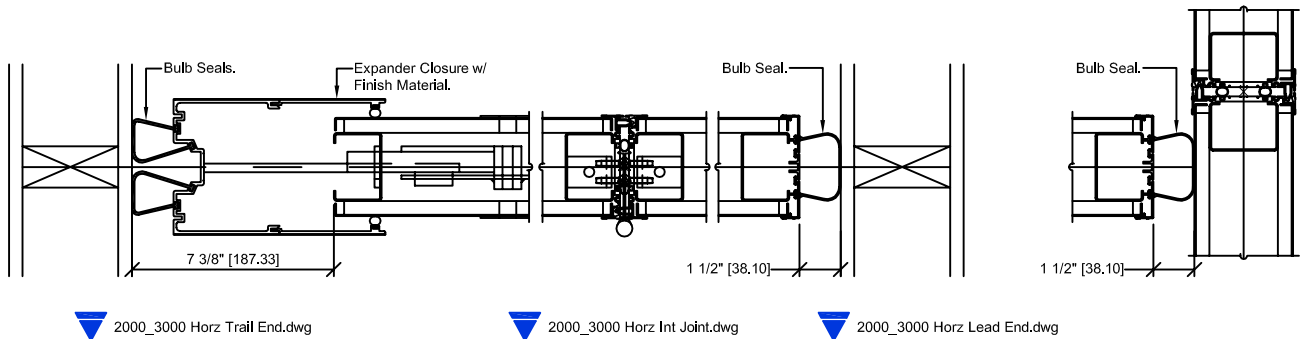




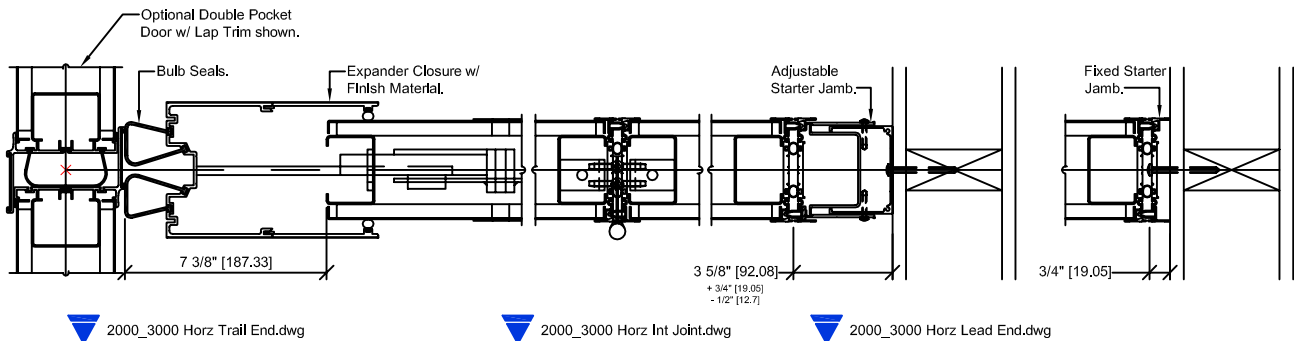
### 3000 Trimless Sealing to Wall Option



### 3000 Trimless Sealing to Pocket Door Option

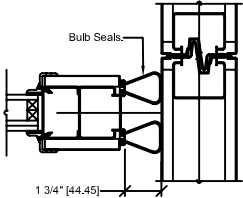


### 3000 Cap "Trimmed" Sealing to Wall Option

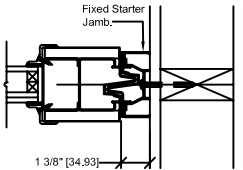


### 3000 Cap "Trimmed" Sealing to Pocket Door Option

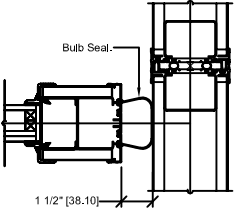
Alternate Lead Conditions



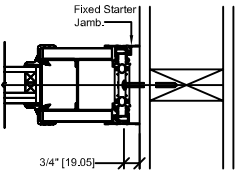
2000\_3000 GL Horiz Lead End.dwg



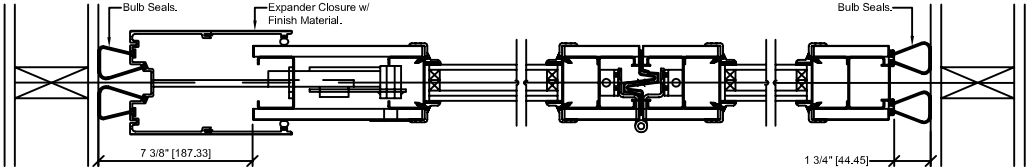
2000\_3000 GL Horiz Lead End.dwg



2000\_3000 GL Horiz Lead End.dwg



2000\_3000 GL Horiz Lead End.dwg

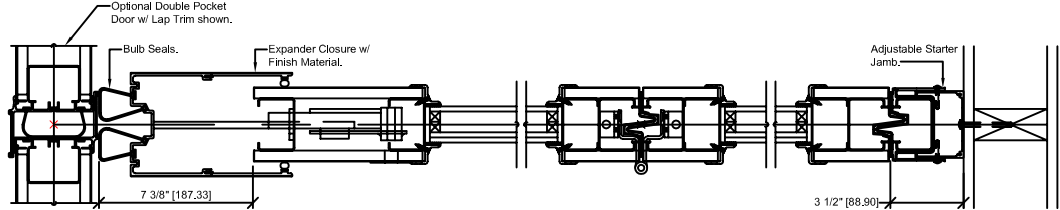


2000\_3000 GL Horiz Trail End.dwg

2000\_3000 GL Horiz Int Joint.dwg

2000\_3000 GL Horiz Lead End.dwg

3000GL Trimless Sealing to Wall Option

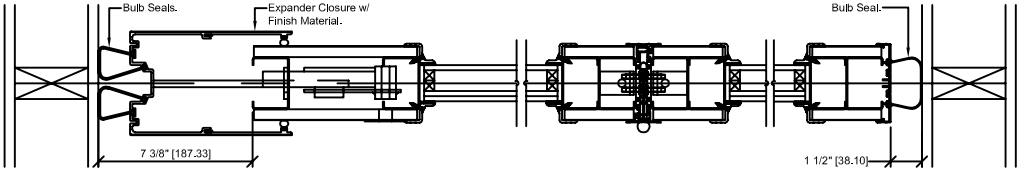


2000\_3000 GL Horiz Trail End.dwg

2000\_3000 GL Horiz Int Joint.dwg

2000\_3000 GL Horiz Lead End.dwg

3000GL Trimless Sealing to Pocket Door Option

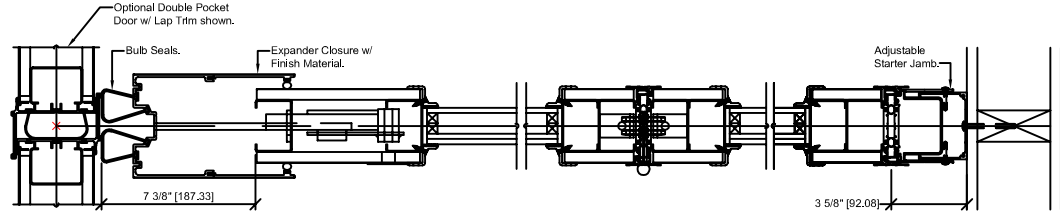


2000\_3000 GL Horiz Trail End.dwg

2000\_3000 GL Horiz Int Joint.dwg

2000\_3000 GL Horiz Lead End.dwg

3000GL Cap "Trimmed" Sealing to Wall Option



2000\_3000 GL Horiz Trail End.dwg

2000\_3000 GL Horiz Int Joint.dwg

2000\_3000 GL Horiz Lead End.dwg

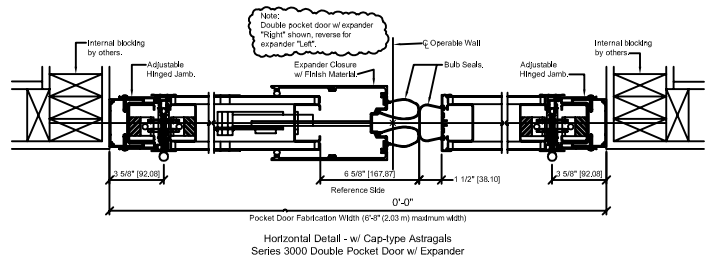
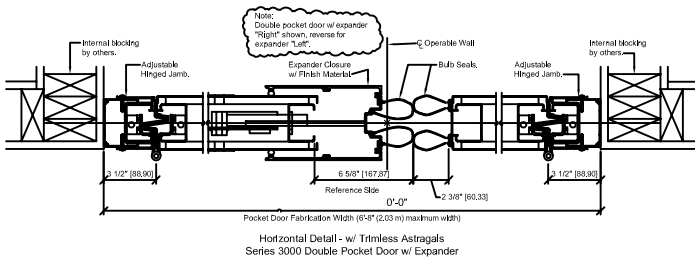
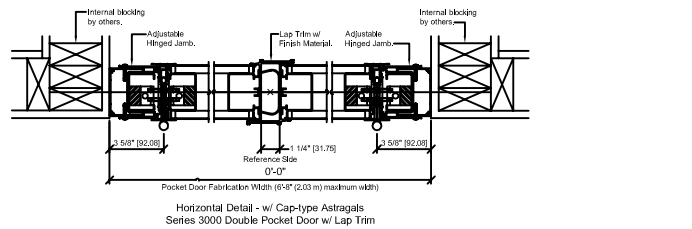
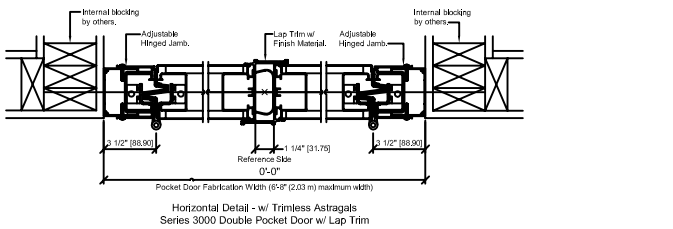
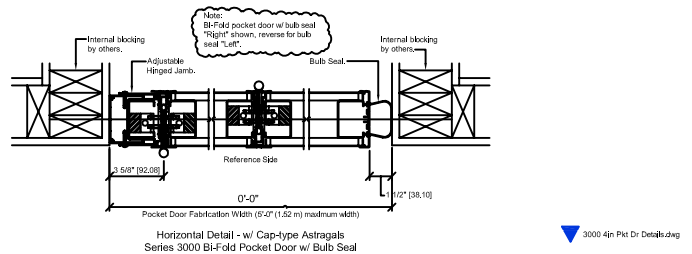
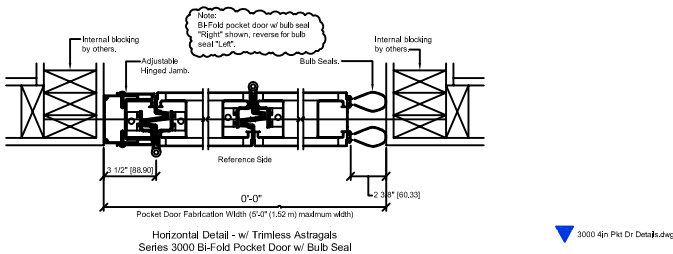
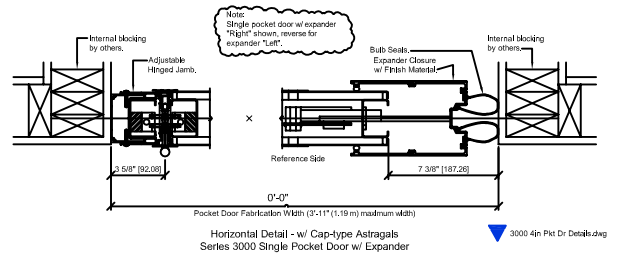
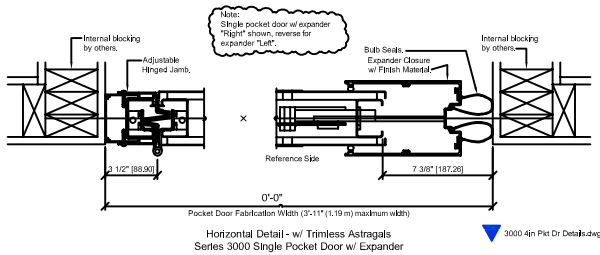
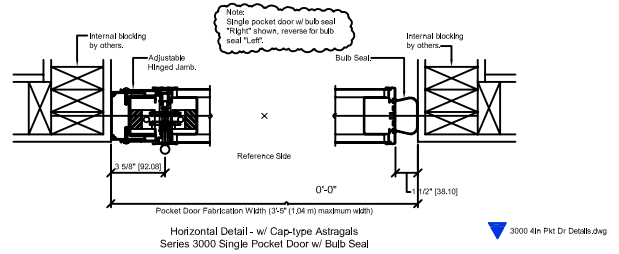
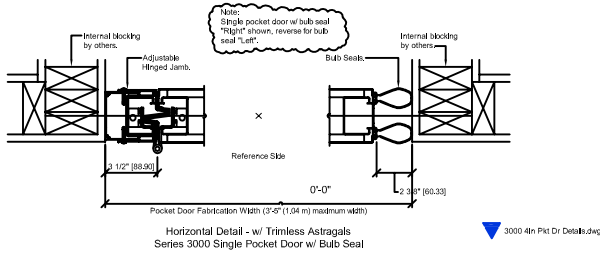
3000GL Cap "Trimmed" Sealing to Pocket Door Option





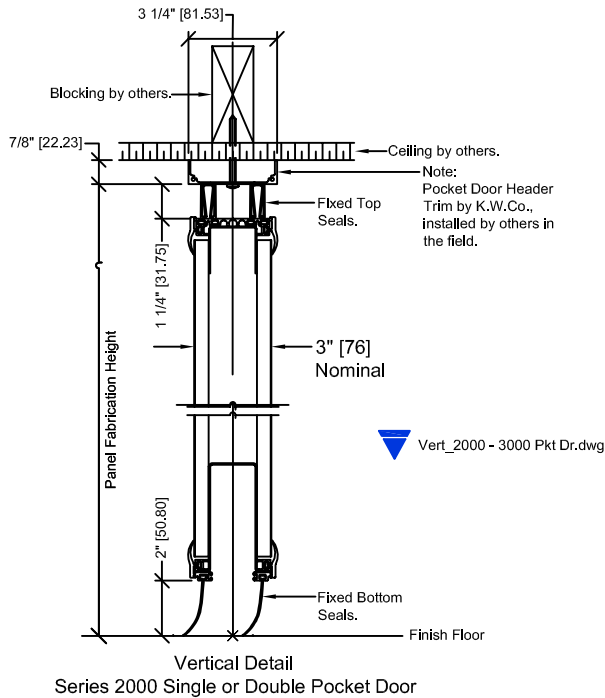
## Pocket Door Options

## Pocket Door Options - CAP (TRIM)

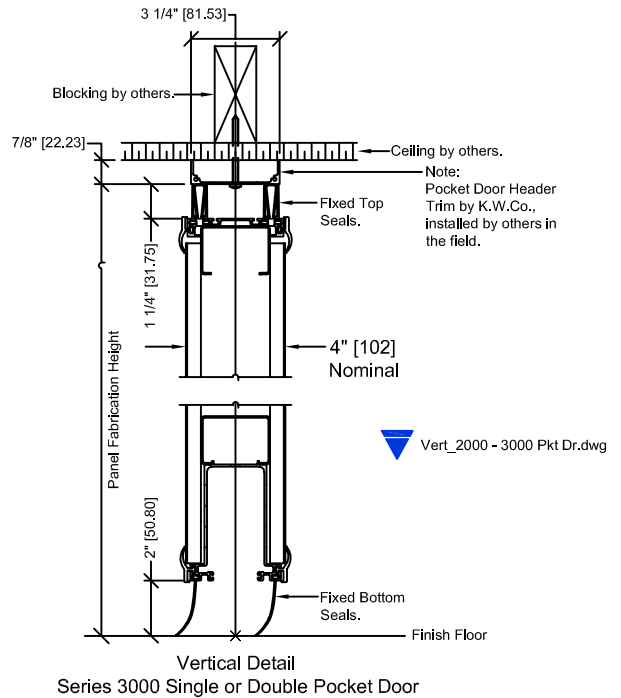




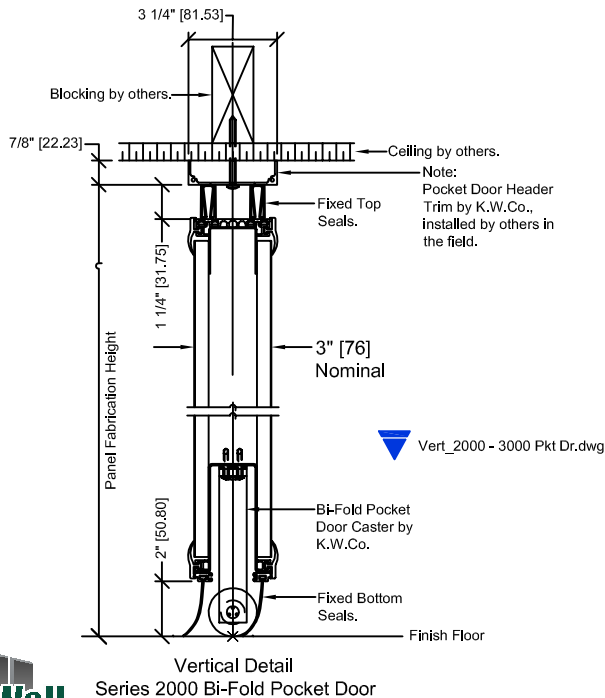
NOTE: Copy and Paste these Blocks into project. Or Insert the blocks per the Noted CAD name from Zip. Use the Triangle Drop-down Menus to meet your project requirement. Call Local Distributor if you have questions.



NOTE: Copy and Paste these Blocks into project. Or Insert the blocks per the Noted CAD name from Zip. Use the Triangle Drop-down Menus to meet your project requirement. Call Local Distributor if you have questions.



NOTE: Copy and Paste these Blocks into project. Or Insert the blocks per the Noted CAD name from Zip. Use the Triangle Drop-down Menus to meet your project requirement. Call Local Distributor if you have questions.



NOTE: Copy and Paste these Blocks into project. Or Insert the blocks per the Noted CAD name from Zip. Use the Triangle Drop-down Menus to meet your project requirement. Call Local Distributor if you have questions.

