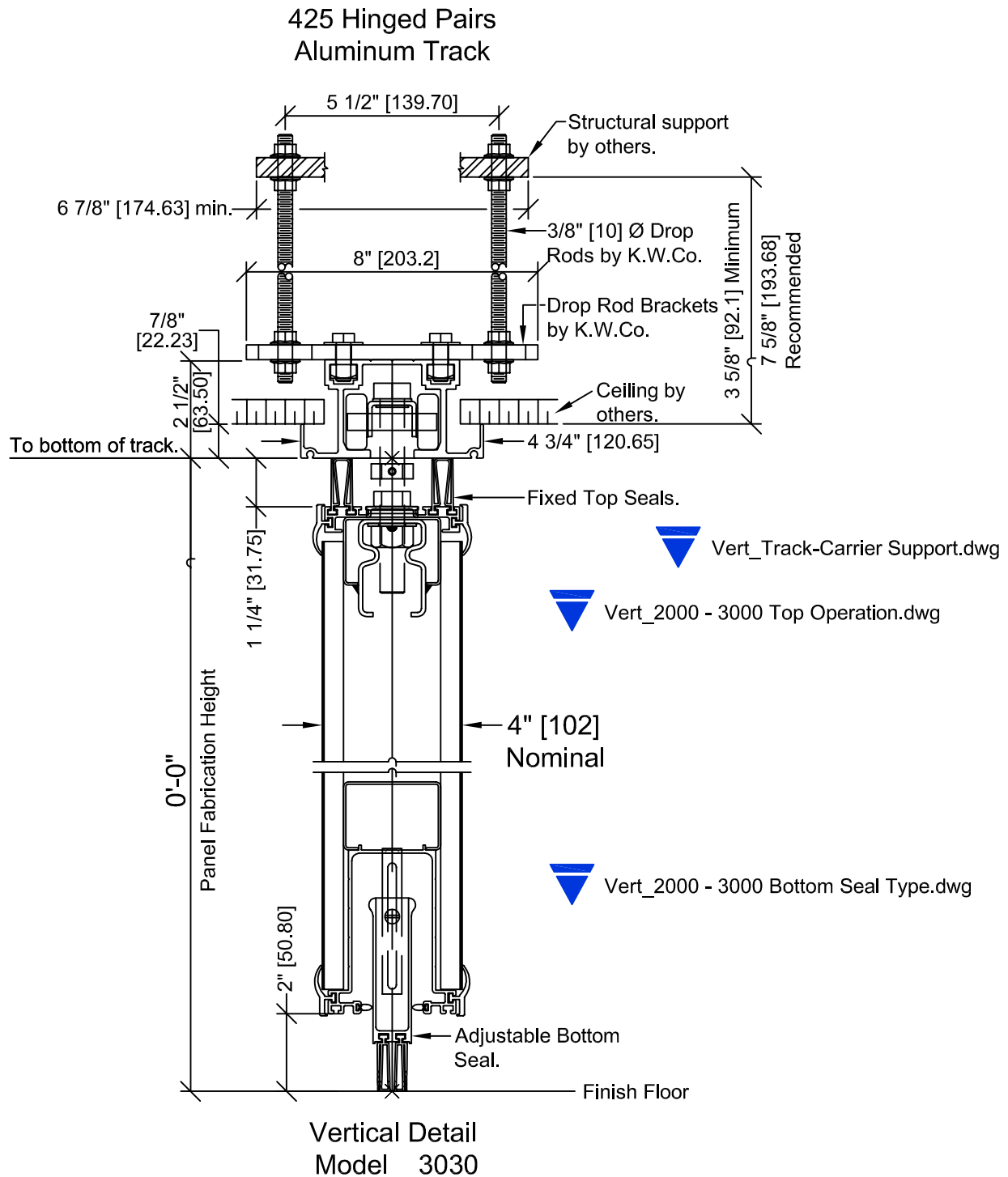
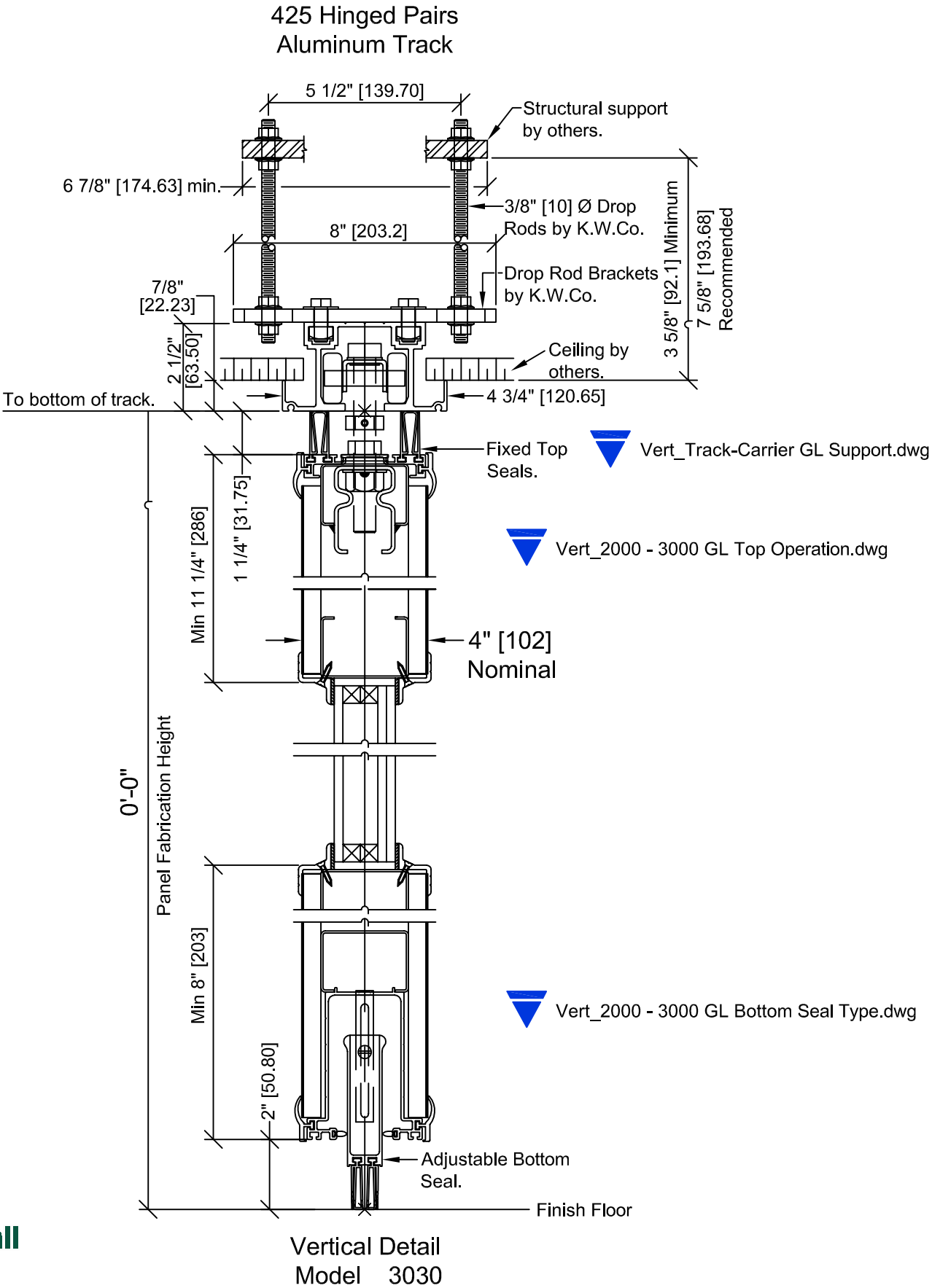


NOTE: Copy and Paste these Blocks into project. Or Insert the blocks per the Noted CAD name from Zip. Use the Triangle Drop-down Menus to meet your project requirement. Call Local Distributor if you have questions.



NOTE: Copy and Paste these Blocks into project. Or Insert the blocks per the Noted CAD name from Zip. Use the Triangle Drop-down Menus to meet your project requirement. Call Local Distributor if you have questions.

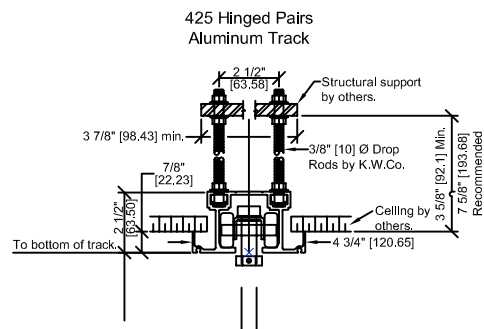
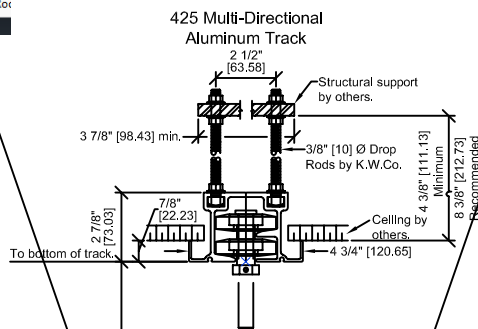


Multi-Directional Track Support Options

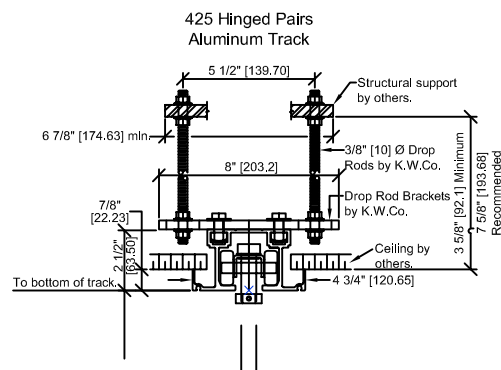
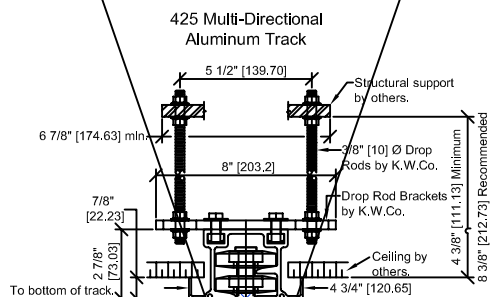
Hinged Pair (Single Carrier) Track Support Options

425 Aluminum Track - up to 525 lb weight per Carrier: *Max ht 14'-2" (See Weight Chart)

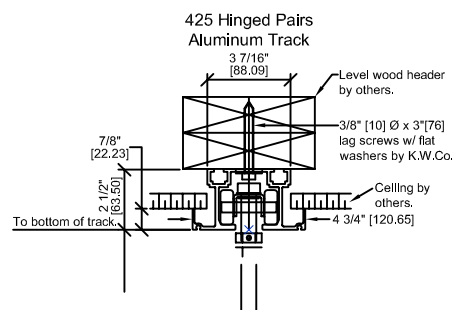
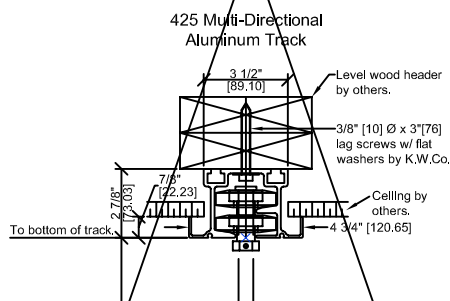
425 Aluminum Track - 2.5" Drop Rod to Structure



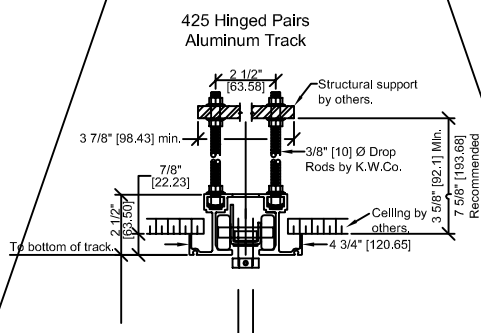
425 Aluminum Track - 5.5" Drop Rod to Structure



425 Aluminum Track - Direct Attachment to Structure



450 C&D Track - 2.5" Drop Rod to Structure



425 Aluminum Track - up to 525 lb weight per Carrier
850 Aluminum Track - up to 850 lb weight per Carrier
850 Steel Track - up to 850 lb weight per Carrier

* Estimated panel weights are for intermediate panels. Weight may vary due to substrate, size, or function of panel. Add 105 lbs [47kg] for pass door. Add 6 lbs [3kg] per lin ft height for expanders. Add 3.5 to 8 lbs [1.6 to 3.6kg] per lin ft for track.

Standard Acoustical Substrate:

- 3000 (4") 43^{STC} (5.9 lb./ft²)
- 3000 (4") 46^{STC} (6.6 lb./ft²)
- 3000 (4") 48^{STC} (7.5 lb./ft²)
- 3000 (4") 50^{STC} (9 lb./ft²)

Optional Steel Skins:

- 3000 (4") 46^{STC} (8.5 lb./ft²)
- 3000 (4") 50^{STC} (9.5 lb./ft²)
- 3000 (4") 52^{STC} (9.5 lb./ft²)
- 3000 (4") 56^{STC} (12.9 lb./ft²)

▼ Vert_Track-Carrier Support.dwg

▼ Vert_Track-Carrier GL Support.dwg

Select Triangle for Drop-down Menu

850 Aluminum Track - 2.5" Drop Rod to Structure

850 Aluminum Track - 5.5" Drop Rod to Structure

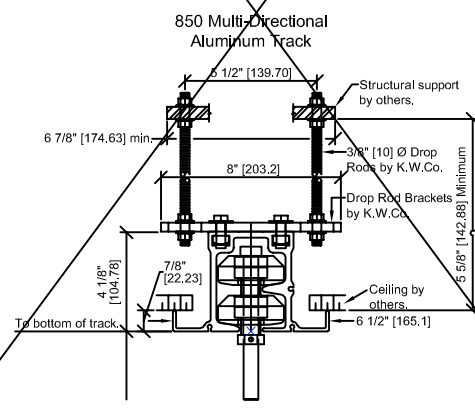
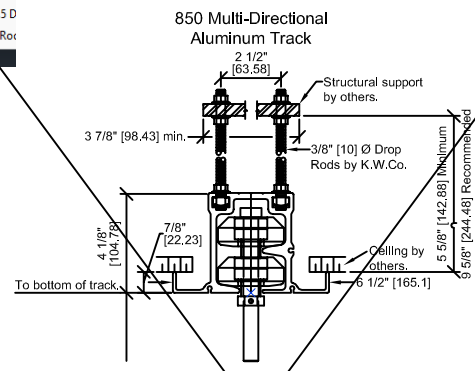
850 C&D and Steel Track - 5.5" Drop Rod to Structure

HD850 C&D Track - 5.5" Drop Rod to Structure

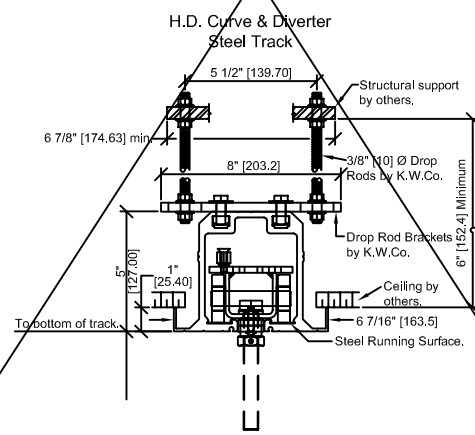
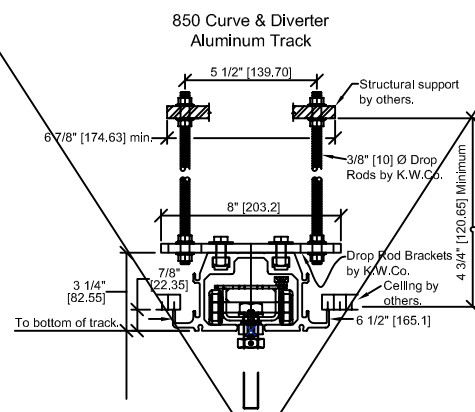


Multi-Directional Track Support Options

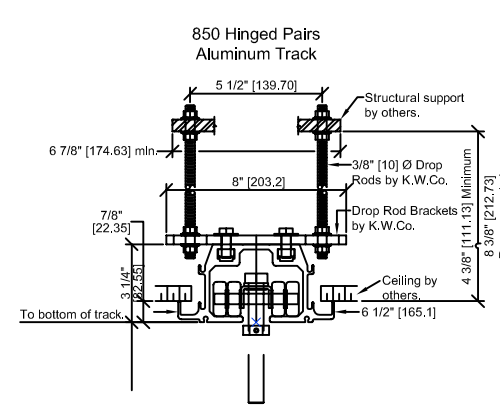
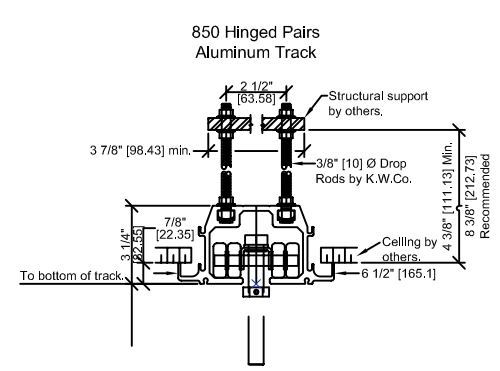
850 Aluminum Track - up to 850 lb weight per Carrier: *Max ht 16'-2" (See Weight Chart)



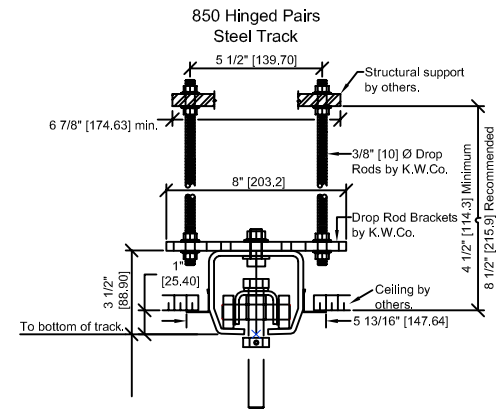
850 C&D Track - up to 850 lb weight per Carrier: *Max ht 30'-0" (See Weight Chart)



Hinged Pair (Single Carrier) Track Support Options



850 Steel Track - up to 850 lb weight per Carrier: *Max ht 16'-2" (See Weight Chart)



425 Aluminum Track - up to 525 lb weight per Carrier
850 Aluminum Track - up to 850 lb weight per Carrier
850 Steel Track - up to 850 lb weight per Carrier

* Estimated panel weights are for intermediate panels. Weight may vary due to substrate, size, or function of panel. Add 105 lbs [47kg] for pass door. Add 6 lbs [3kg] per lin ft height for expanders. Add 3.5 to 8 lbs [1.6 to 3.6kg] per lin ft for track.

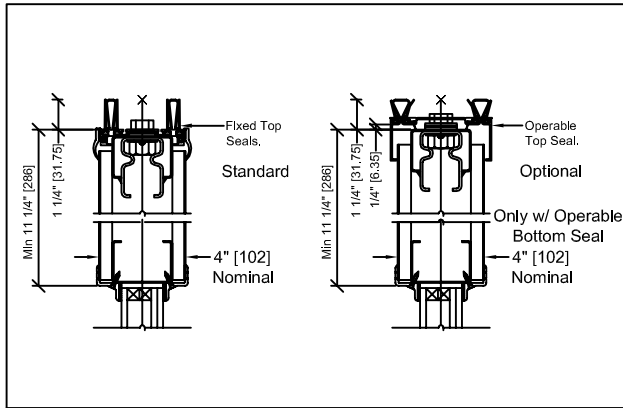
- Standard Acoustical Substrate:
- 3000 (4") 43^{STC} (5.9 lb./ft²)
 - 3000 (4") 46^{STC} (6.6 lb./ft²)
 - 3000 (4") 48^{STC} (7.5 lb./ft²)
 - 3000 (4") 50^{STC} (9 lb./ft²)

- Optional Steel Skins:
- 3000 (4") 46^{STC} (8.5 lb./ft²)
 - 3000 (4") 50^{STC} (9.5 lb./ft²)
 - 3000 (4") 52^{STC} (9.5 lb./ft²)
 - 3000 (4") 56^{STC} (12.9 lb./ft²)

▼ Vert_Track-Carrier Support.dwg

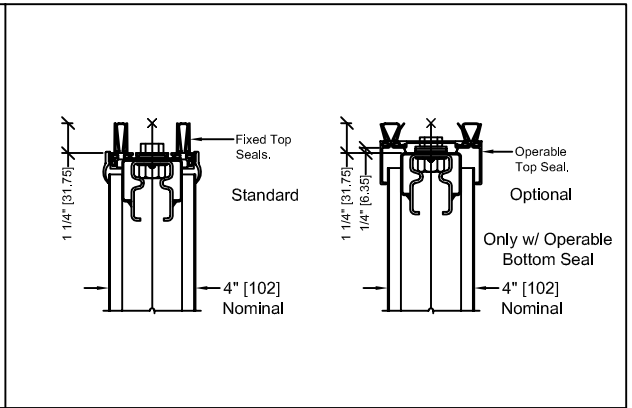
▼ Vert_Track-Carrier GL Support.dwg

Model 3000 - GL Top Seal Condition



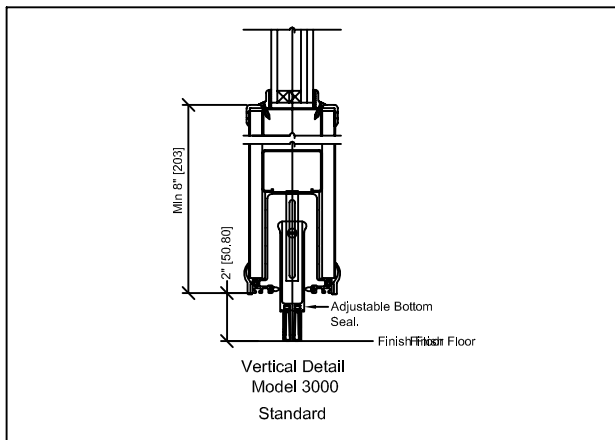
▼ Vert_2000 - 3000 GL Top Operation.dwg

Model 3000 - Top Seal Condition



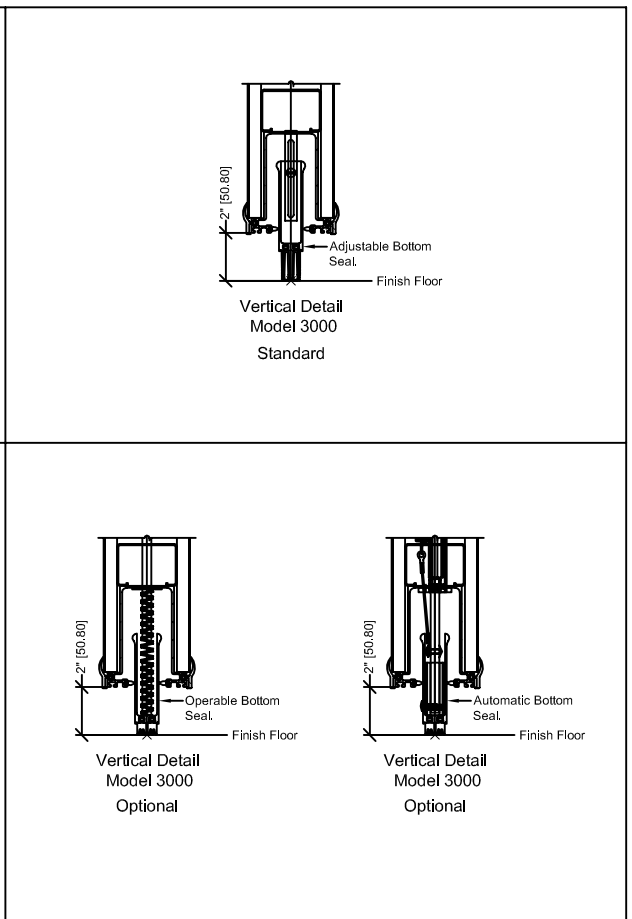
▼ Vert_2000 - 3000 Top Operation.dwg

Model 3000 - GL Bottom Seal Condition

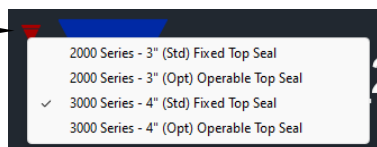


▼ Vert_2000 - 3000 GL Bottom Seal Type.dwg

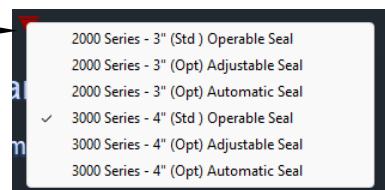
Model 3000 - Bottom Seal Condition



▼ Vert_2000 - 3000 Bottom Seal Type.dwg

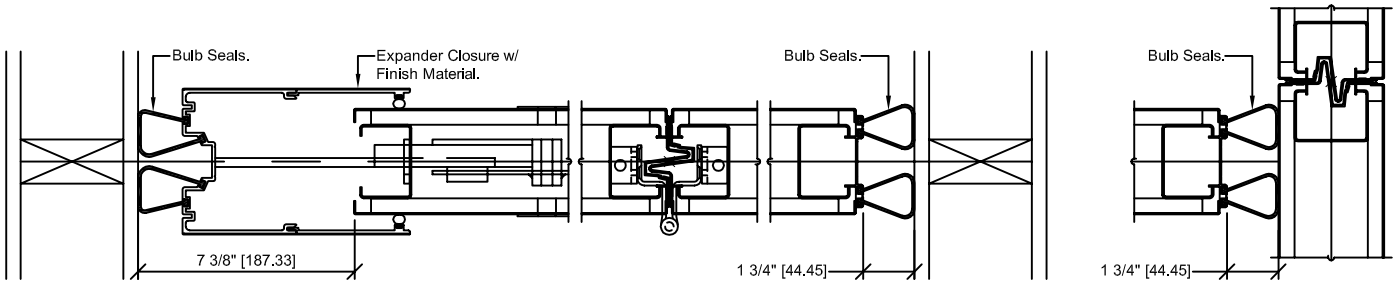


Select Triangle for Drop-down Menu



Select Triangle for Drop-down Menu



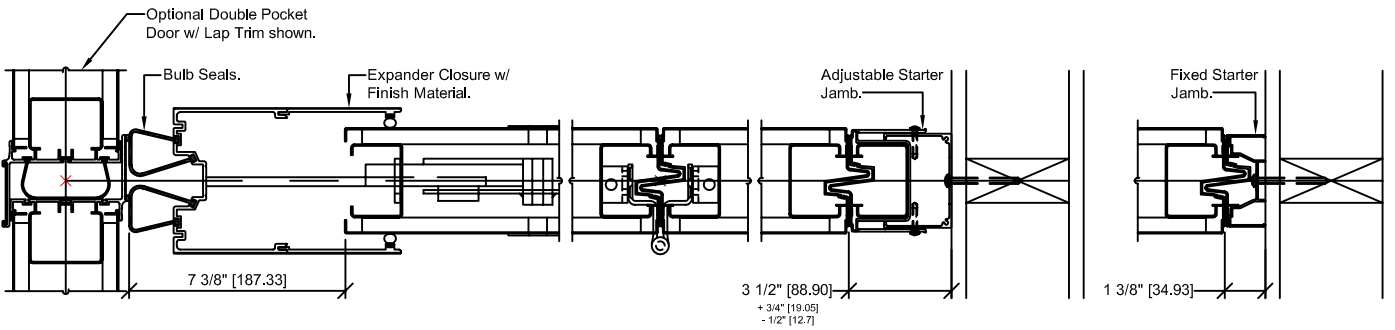


2000_3000 Horiz Trail End.dwg

2000_3000 Horiz Int Joint.dwg

2000_3000 Horiz Lead End.dwg

3000 Trimless Sealing to Wall Option

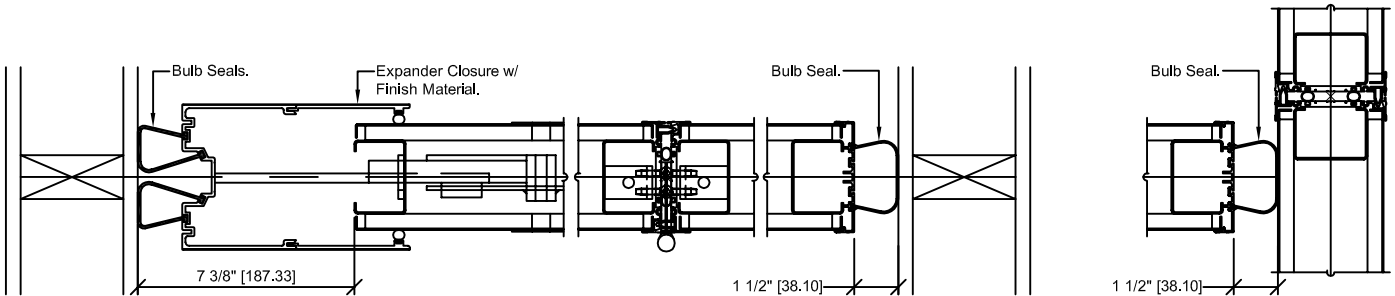


2000_3000 Horiz Trail End.dwg

2000_3000 Horiz Int Joint.dwg

2000_3000 Horiz Lead End.dwg

3000 Trimless Sealing to Pocket Door Option

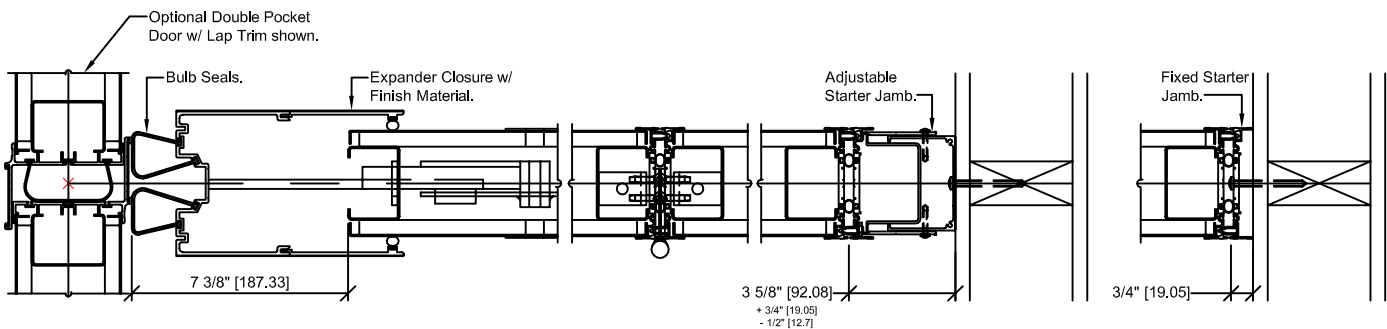


2000_3000 Horiz Trail End.dwg

2000_3000 Horiz Int Joint.dwg

2000_3000 Horiz Lead End.dwg

3000 Cap "Trimmed" Sealing to Wall Option



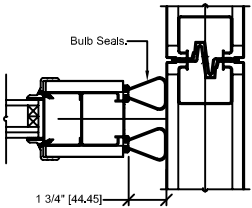
2000_3000 Horiz Trail End.dwg

2000_3000 Horiz Int Joint.dwg

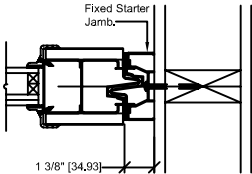
2000_3000 Horiz Lead End.dwg

3000 Cap "Trimmed" Sealing to Pocket Door Option

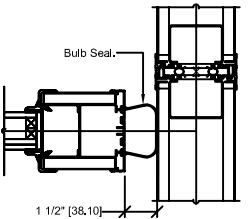
Alternate Lead Conditions



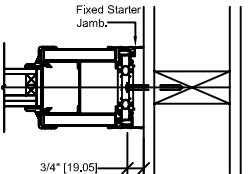
2000_3000 GL Horiz Lead End.dwg



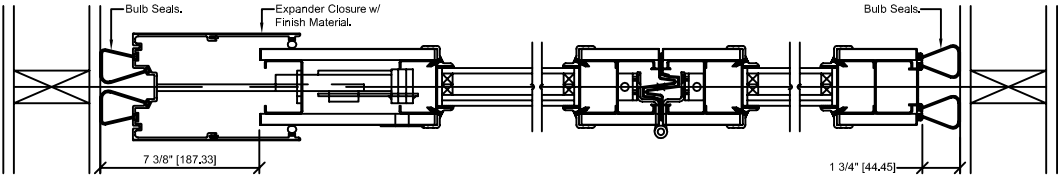
2000_3000 GL Horiz Lead End.dwg



2000_3000 GL Horiz Lead End.dwg



2000_3000 GL Horiz Lead End.dwg

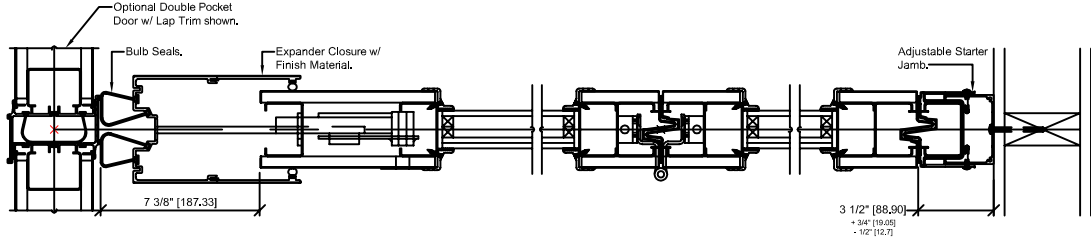


2000_3000 GL Horiz Trail End.dwg

2000_3000 GL Horiz Int Joint.dwg

2000_3000 GL Horiz Lead End.dwg

3000GL Trimless Sealing to Wall Option

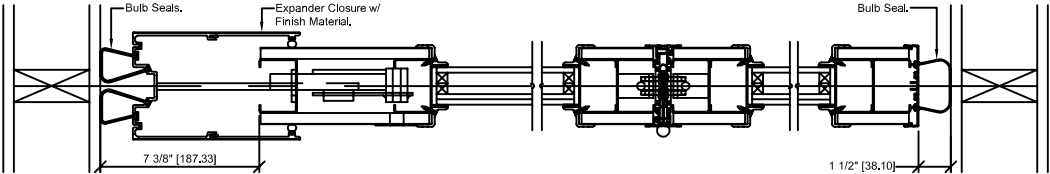


2000_3000 GL Horiz Trail End.dwg

2000_3000 GL Horiz Int Joint.dwg

2000_3000 GL Horiz Lead End.dwg

3000GL Trimless Sealing to Pocket Door Option

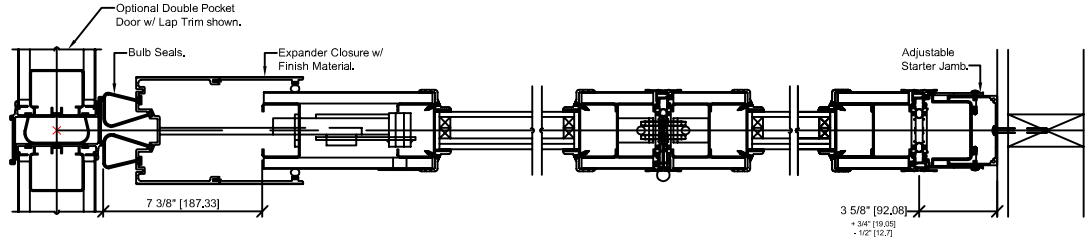


2000_3000 GL Horiz Trail End.dwg

2000_3000 GL Horiz Int Joint.dwg

2000_3000 GL Horiz Lead End.dwg

3000GL Cap "Trimmed" Sealing to Wall Option



2000_3000 GL Horiz Trail End.dwg

2000_3000 GL Horiz Int Joint.dwg

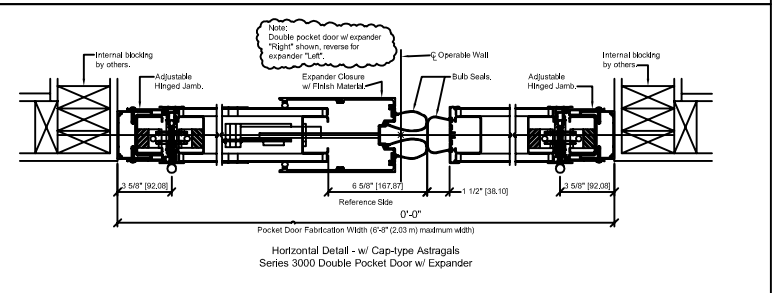
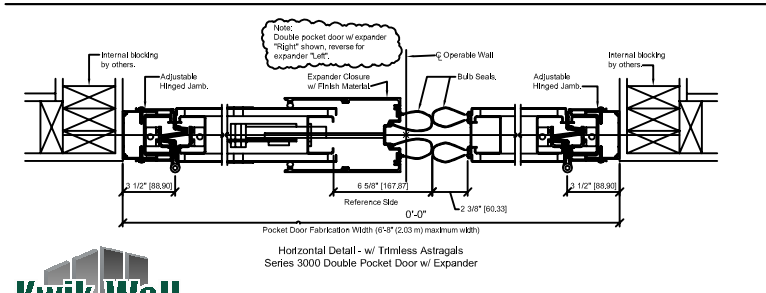
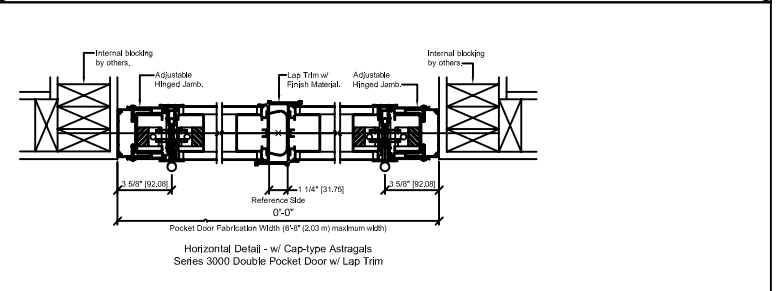
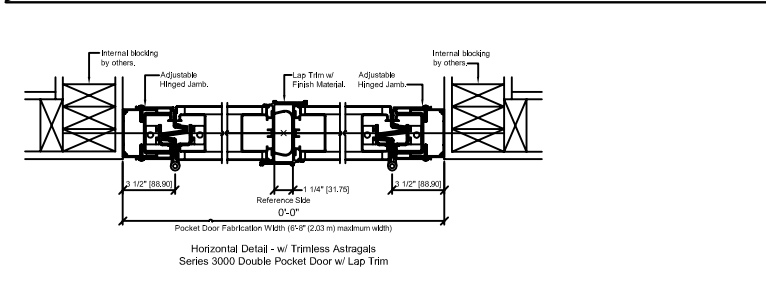
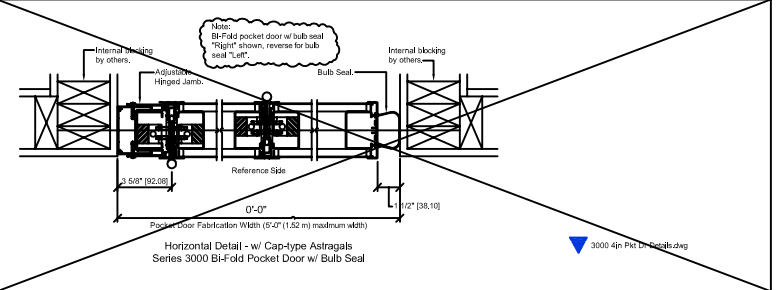
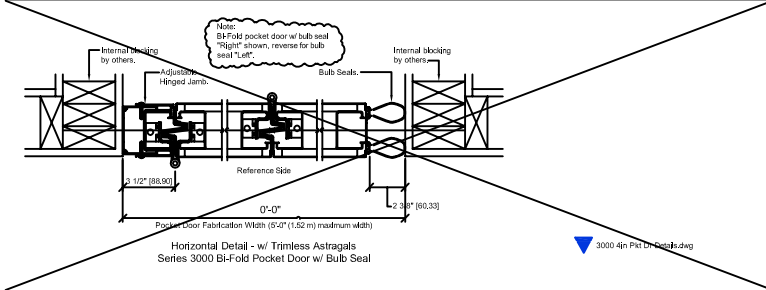
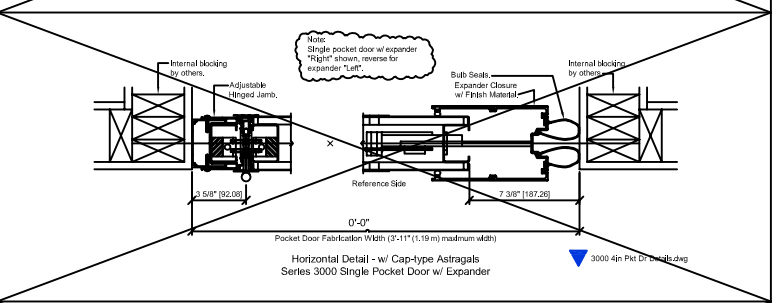
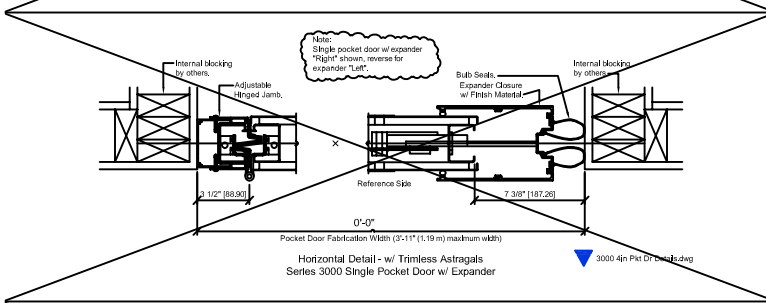
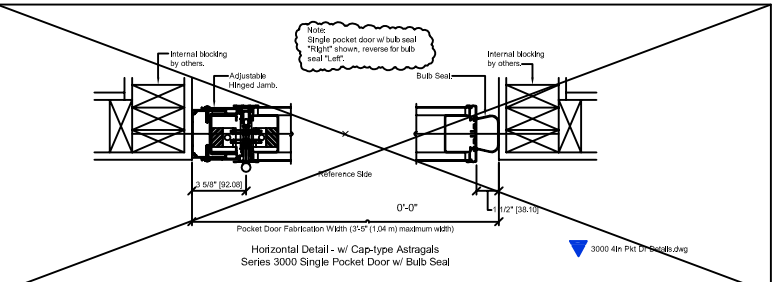
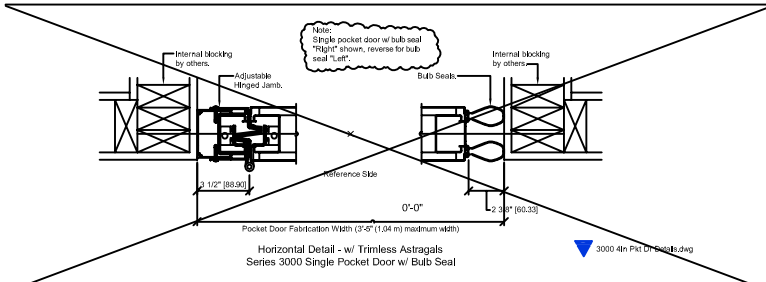
2000_3000 GL Horiz Lead End.dwg

3000GL Cap "Trimmed" Sealing to Pocket Door Option

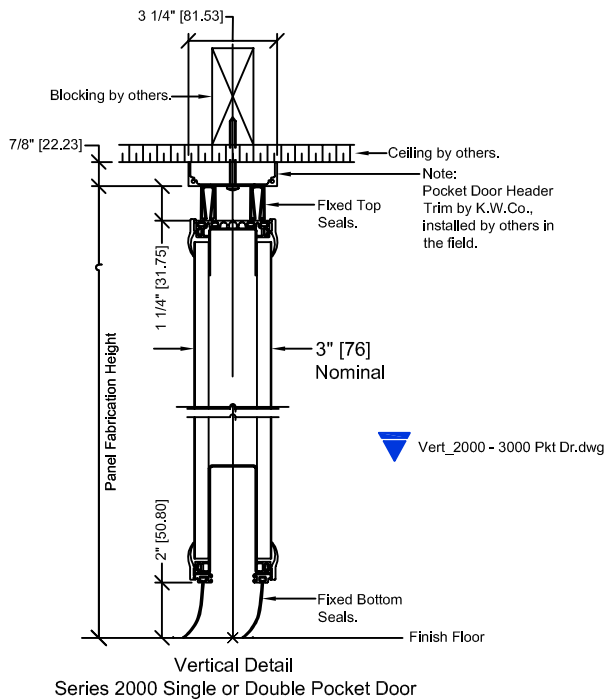


Pocket Door Options

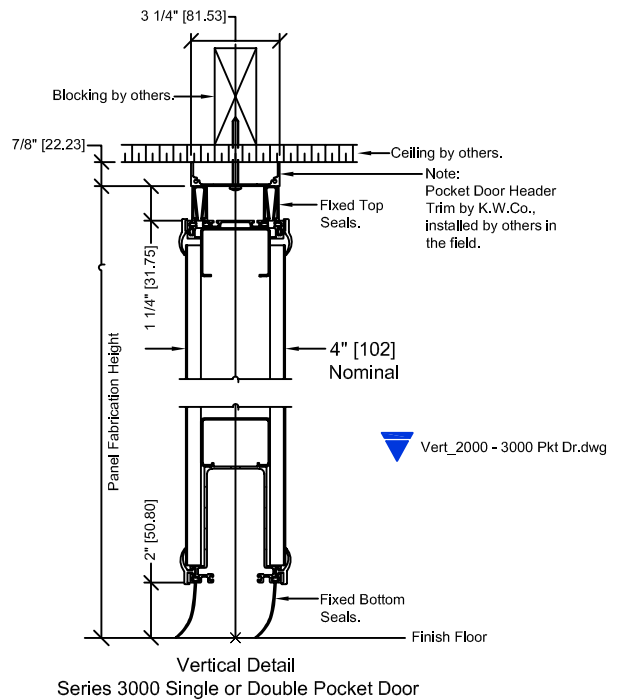
Pocket Door Options - CAP (TRIM)



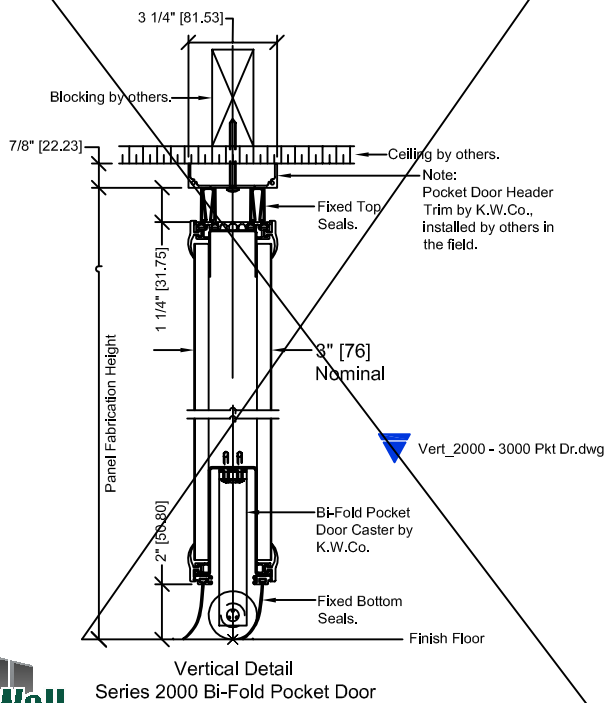
NOTE: Copy and Paste these Blocks into project. Or Insert the blocks per the Noted CAD name from Zip. Use the Triangle Drop-down Menus to meet your project requirement. Call Local Distributor if you have questions.



NOTE: Copy and Paste these Blocks into project. Or Insert the blocks per the Noted CAD name from Zip. Use the Triangle Drop-down Menus to meet your project requirement. Call Local Distributor if you have questions.



NOTE: Copy and Paste these Blocks into project. Or Insert the blocks per the Noted CAD name from Zip. Use the Triangle Drop-down Menus to meet your project requirement. Call Local Distributor if you have questions.



NOTE: Copy and Paste these Blocks into project. Or Insert the blocks per the Noted CAD name from Zip. Use the Triangle Drop-down Menus to meet your project requirement. Call Local Distributor if you have questions.

