



**Kwik-Wall**

STANDARD FABRIC SELECTOR

---

TRANSFORMING SPACE INTO  
**POSSIBILITIES**



# GALAXY•STRATUS•WHISPER

## HIGH PERFORMANCE WOVENS

### SPECIFICATIONS

|               | GALAXY  | STRATUS                      | WHISPER                      |
|---------------|---|------------------------------|------------------------------|
| WIDTH:        | 54"   | 54"                          | 55"                          |
| TOTAL WEIGHT: | 15 oz. per linear yard                                    | 13 oz. per linear yard       | 10.8 oz. per linear yard     |
| BACKING:      | Acrylic   | Acrylic Latex                | Acrylic                      |
| CONTENT:      | 70% Polyester,<br>30% Post-Consumer<br>Recycled Polyester | 51% Polyester,<br>49% Olefin | 58% Polyester,<br>42% Olefin |
| FINISH:       | Stain Repellent   |                              |                              |
| INSTALLATION: | Non-Reversible / Random Match                             |                              |                              |

### PERFORMANCE

|                         |   |   |  |
|-------------------------|---|---|--|
| FLAMMABILITY:           | Passes ASTM E-84 Class A<br>Tested in Accordance with CAN/ULC-S102<br>Tested in Accordance with (EN13501): B-s1,d0 rating |   |  |
| COLORFASTNESS TO LIGHT: | <b>GALAXY, STRATUS</b><br>(AATCC Method 16): Class 5 (40 hours)   | <b>WHISPER</b><br>(AATCC Method 16): Class 4 (40 hours) |  |

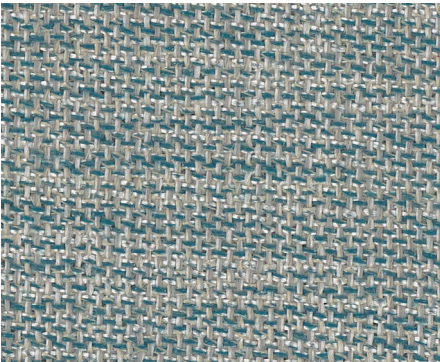
### QUALITY STANDARDS

|                |  |
|----------------|--|
| ENVIRONMENTAL: | Created with No PVC, No Heavy Metals or Formaldehyde,<br>No ODSs, No Phthalates, No VOCs |
| CLEANING CODE: | WS & BC – Water/Solvent & Bleach Cleanable   |

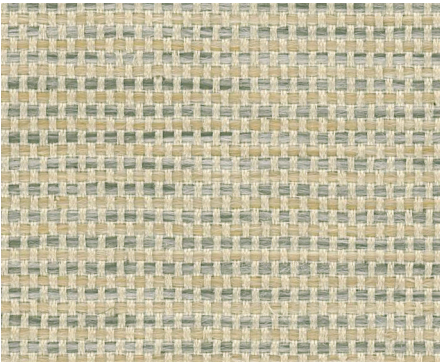
### INSTALLATION

Swatch color may differ from production due to dye-lot variations. Lighting within a space may also alter color appearances.

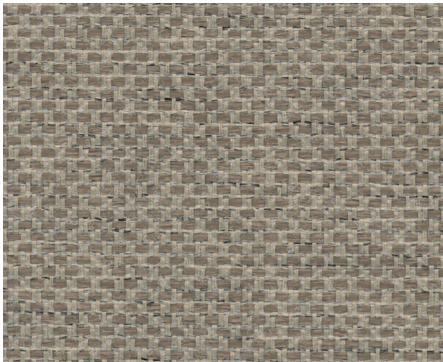
Shown on Front: Stratus 39-31



GALAXY 194-08



STRATUS 39-25



WHISPER 197-05



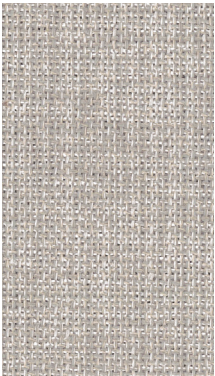
WWW.KWIK-WALL.COM



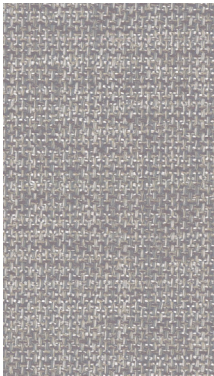
The assigned numerical reading and other tests referenced in this text are not intended to reflect hazards presented by this or any other material under actual fire cognitions. Consult an architect or fire safety engineer for information on applicable building codes and reduction of fire hazards, including the use of sprinklers.



**GALAXY**



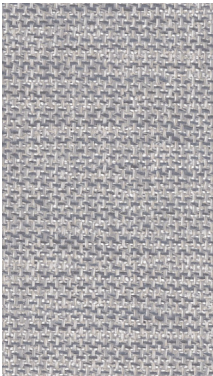
CEPHEUS  
194-02



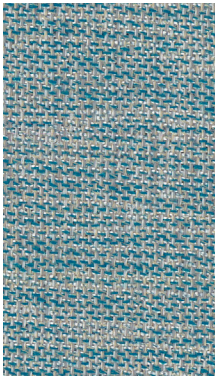
CASSIOPEIA  
194-01



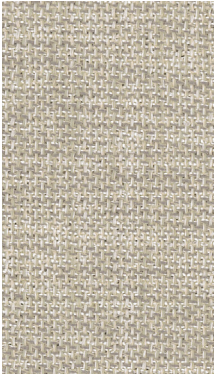
PEGASUS  
194-07



PHOENIX  
194-10



HYDRUS  
194-08



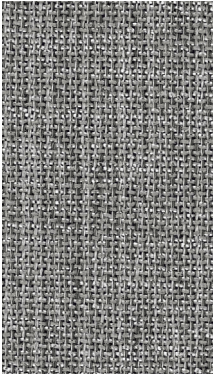
PYXIS  
194-03



MONOCEROS  
194-06



AQUILA  
194-05



ORION  
194-04

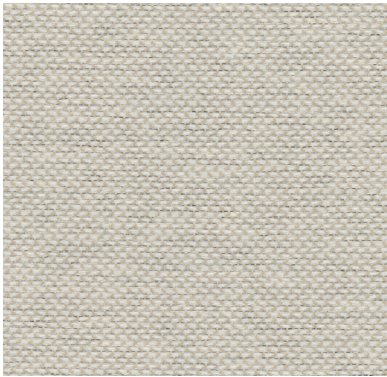


PISCES  
194-09

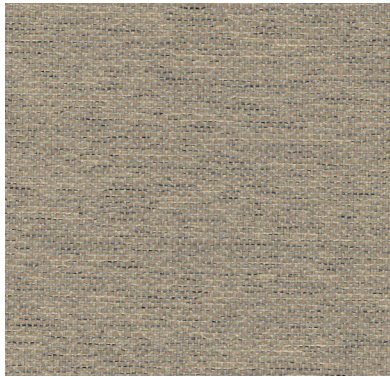
**WHISPER**



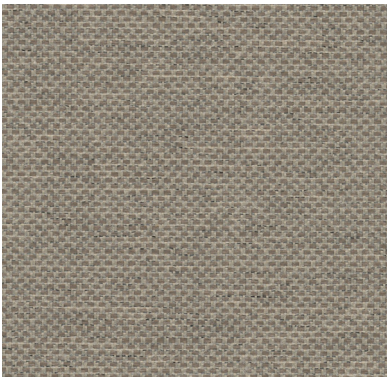
SNOW  
197-01



LINEN  
197-02



SAND  
197-03



MOCHA  
197-05



GRAPHITE  
197-04



BLACK  
197-06



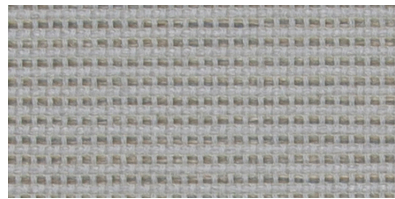
# STRATUS



COTTAGE  
39-31



MIST  
39-28



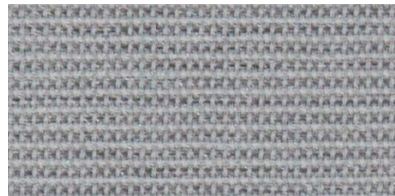
STARLIGHT  
39-29



PARCHMENT  
39-24



PLASTER  
39-32



GRAY  
39-34



SAND  
39-17



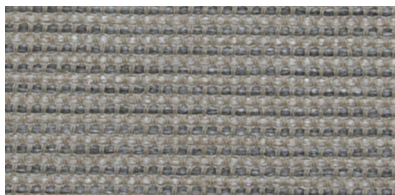
DISCOVER  
39-33



BAHAMAS  
39-27



OLIVE GROVE  
39-25



GRAPHITE  
39-10



SILVERADO  
39-30



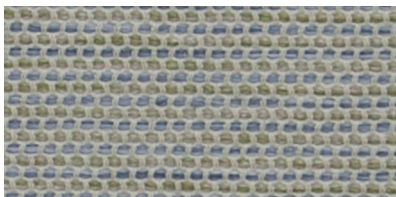
GLACIER  
39-09



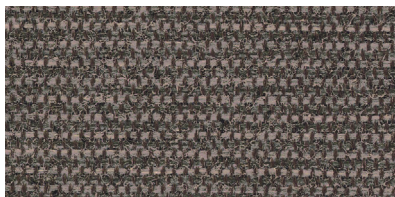
ELEMENT  
39-38



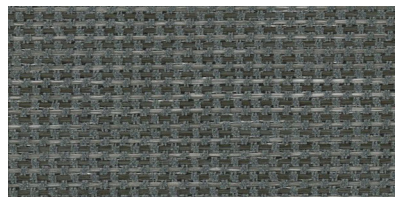
GATED  
39-35



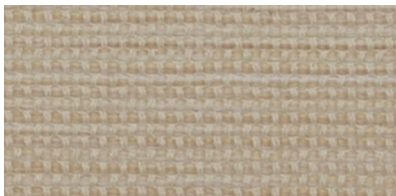
CASARINA  
39-26



ARMOR  
39-39



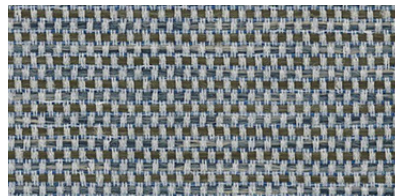
WILDERNESS  
39-36



TRUFFLE  
39-22



PEPPER  
39-40



LAGUNA  
39-37